

Product datasheet for **TA342369**

TMEM144 Rabbit Polyclonal Antibody

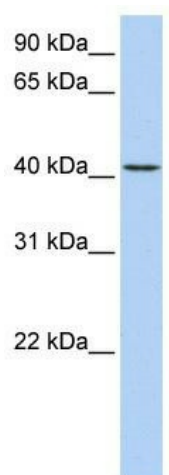
Product data:

Product Type:	Primary Antibodies
Applications:	WB
Recommended Dilution:	WB
Reactivity:	Human
Host:	Rabbit
Isotype:	IgG
Clonality:	Polyclonal
Immunogen:	The immunogen for anti-TMEM144 antibody: synthetic peptide directed towards the middle region of human TMEM144. Synthetic peptide located within the following region: LSTVHHRIVGCSLAVISGVLYGSTFVPIIYIKDHSKRNDISIYAGASQYDL
Formulation:	Liquid. Purified antibody supplied in 1x PBS buffer with 0.09% (w/v) sodium azide and 2% sucrose.
Conjugation:	Unconjugated
Storage:	Store at -20°C as received.
Stability:	Stable for 12 months from date of receipt.
Predicted Protein Size:	38 kDa
Gene Name:	transmembrane protein 144
Database Link:	NP_060812 Entrez Gene 55314 Human Q7Z5S9
Background:	TMEM144 belongs to the TMEM144 family. It is a multi-pass membrane protein. The function of the TMEM144 protein remains unknown.
Synonyms:	FLJ11155
Note:	Immunogen Sequence Homology: Dog: 100%; Pig: 100%; Rat: 100%; Horse: 100%; Human: 100%; Bovine: 100%; Rabbit: 93%; Mouse: 86%; Guinea pig: 79%
Protein Families:	Transmembrane



[View online »](#)

Product images:



WB Suggested Anti-TMEM144 Antibody Titration:
0.2-1 ug/ml; ELISA Titer: 1: 312500; Positive
Control: Human Lung