

Product datasheet for **TA342365**

Transmembrane protein 30A (TMEM30A) Rabbit Polyclonal Antibody

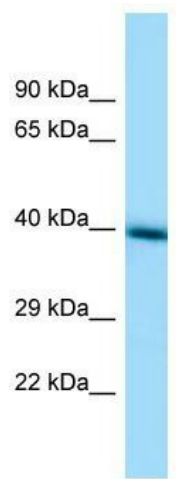
Product data:

Product Type:	Primary Antibodies
Applications:	IHC, WB
Recommended Dilution:	WB, IHC
Reactivity:	Human
Host:	Rabbit
Isotype:	IgG
Clonality:	Polyclonal
Immunogen:	The immunogen for anti-TMEM30A antibody is: synthetic peptide directed towards the middle region of Human TMEM30A. Synthetic peptide located within the following region: FTLEKSFEGNVFMYGLSNFYQNHRRYVKSRDDSQLNGDSSALLNPSKEC
Formulation:	Liquid. Purified antibody supplied in 1x PBS buffer with 0.09% (w/v) sodium azide and 2% sucrose. <i>Note that this product is shipped as lyophilized powder to China customers.</i>
Conjugation:	Unconjugated
Storage:	Store at -20°C as received.
Stability:	Stable for 12 months from date of receipt.
Predicted Protein Size:	41 kDa
Gene Name:	transmembrane protein 30A
Database Link:	NP_060717 Entrez Gene 55754 Human Q9NV96
Background:	The function of this protein remains unknown.
Synonyms:	C6orf67; CDC50A
Note:	Immunogen Sequence Homology: Dog: 100%; Pig: 100%; Rat: 100%; Horse: 100%; Human: 100%; Mouse: 100%; Zebrafish: 100%; Guinea pig: 100%; Bovine: 92%
Protein Families:	Druggable Genome, Transmembrane

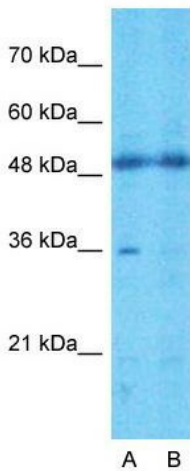


[View online »](#)

Product images:



WB Suggested Anti-TMEM30A Antibody Titration: 1 ug/ml; Positive Control: HepG2 cell lysate



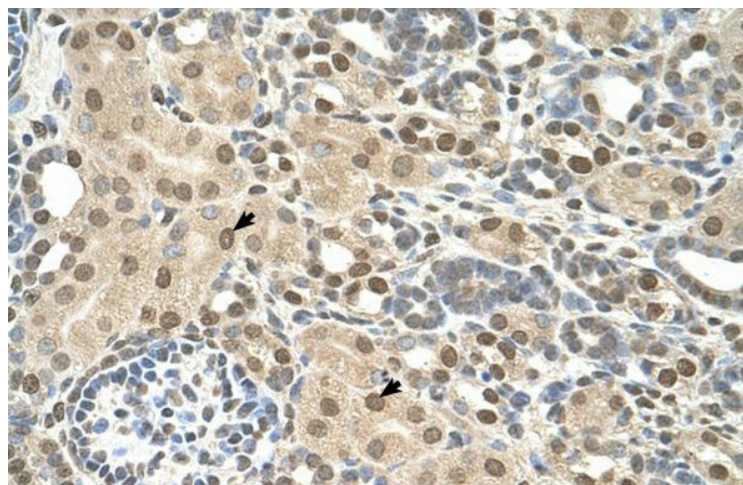
Anti-TMEM30A Western Blot & Peptide Block Validation

Lysate: 721_B Cell

Lane A: Primary Antibody
Lane B: Primary Antibody + Blocking Peptide

Primary Antibody Concentration: 1.0µg/ml
Peptide Concentration: 5.0µg/ml
Lysate Quantity: 25µg/lane
Gel Concentration: 12%

Host: Rabbit; Target Name: TMEM30A; Sample Tissue: 721_B; Lane A: Primary Antibody; Lane B: Primary Antibody + Blocking Peptide; Primary Antibody Concentration: 1 ug/ml; Peptide Concentration: 5 ug/ml; Lysate Quantity: 25 ug/lane/lane; Gel Concentration:



Rabbit Anti-TMEM30A Antibody; Paraffin Embedded Tissue: Human Kidney; Cellular Data: Epithelial cells of renal tubule; Antibody Concentration: 4.0-8.0 ug/ml; Magnification: 400X