

Product datasheet for TA342363

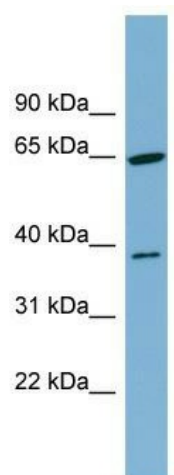
CARKD (NAXD) Rabbit Polyclonal Antibody

Product data:

| | |
|-------------------------|--|
| Product Type: | Primary Antibodies |
| Applications: | WB |
| Recommended Dilution: | WB |
| Reactivity: | Human |
| Host: | Rabbit |
| Isotype: | IgG |
| Clonality: | Polyclonal |
| Immunogen: | The immunogen for anti-FLJ10769 antibody: synthetic peptide directed towards the middle region of human FLJ10769. Synthetic peptide located within the following region: ILSNGQQVLVCSQEGSSRRRCGGQGDLLSGSLGVLVHWALLAGPQKTNGGI |
| Formulation: | Liquid. Purified antibody supplied in 1x PBS buffer with 0.09% (w/v) sodium azide and 2% sucrose. |
| Conjugation: | Unconjugated |
| Storage: | Store at -20°C as received. |
| Stability: | Stable for 12 months from date of receipt. |
| Predicted Protein Size: | 41 kDa |
| Gene Name: | NAD(P)HX dehydratase |
| Database Link: | NP_060680 Entrez Gene 55739 Human Q8IW45 |
| Background: | The exact function of FLJ10769 remains unknown. |
| Synonyms: | CARKD; LP3298 |
| Note: | Immunogen Sequence Homology: Pig: 100%; Rat: 100%; Horse: 100%; Human: 100%; Mouse: 100%; Bovine: 100%; Rabbit: 100%; Zebrafish: 100%; Dog: 93%; Guinea pig: 86%; Yeast: 85% |
| Protein Families: | Transmembrane |


[View online »](#)

Product images:



WB Suggested Anti-FLJ10769 Antibody Titration:
0.2-1 ug/ml; Positive Control: THP-1 cell lysate