

Product datasheet for **TA342361**

MACO1 Rabbit Polyclonal Antibody

Product data:

Product Type:	Primary Antibodies
Applications:	WB
Recommended Dilution:	WB
Reactivity:	Human
Host:	Rabbit
Isotype:	IgG
Clonality:	Polyclonal
Immunogen:	The immunogen for anti-TMEM57 antibody: synthetic peptide directed towards the N terminal of human TMEM57. Synthetic peptide located within the following region: VVWALVLLADFLVLEFRFEYLWPFWLFIRSVYDSFRYQGLAFSVFFCVAF
Formulation:	Liquid. Purified antibody supplied in 1x PBS buffer with 0.09% (w/v) sodium azide and 2% sucrose. <i>Note that this product is shipped as lyophilized powder to China customers.</i>
Conjugation:	Unconjugated
Storage:	Store at -20°C as received.
Stability:	Stable for 12 months from date of receipt.
Predicted Protein Size:	76 kDa
Gene Name:	transmembrane protein 57
Database Link:	NP_060672 Entrez Gene 55219 Human Q8N5G2
Background:	The exact function of this protein remains unknown
Synonyms:	MACOILIN
Note:	Immunogen Sequence Homology: Dog: 100%; Pig: 100%; Rat: 100%; Horse: 100%; Human: 100%; Mouse: 100%; Bovine: 100%; Rabbit: 100%; Zebrafish: 100%; Guinea pig: 100%
Protein Families:	Transmembrane



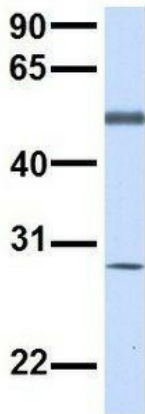
[View online »](#)

Product images:



WB Suggested Anti-TMEM57 Antibody Titration:
0.2-1 ug/ml; ELISA Titer: 1: 62500; Positive
Control: MDA-MB-435S cell lysate

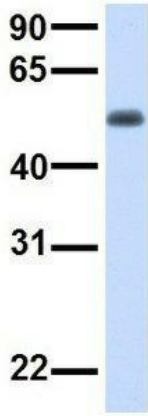
TMEM57



Rabbit Anti-TMEM57
Sample Type: Human Adult
Placenta
Antibody Concentration: 1ug/mL

Host: Rabbit; Target Name: TMEM57; Sample
Tissue: Human Adult Placenta; Antibody Dilution:
1.0 ug/ml

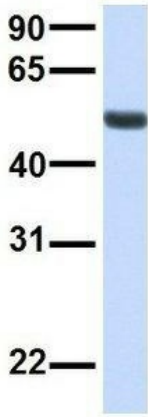
TMEM57



Rabbit Anti-TMEM57
Sample Type: Human Fetal Muscle
Antibody Concentration: 1ug/mL

Host: Rabbit; Target Name: TMEM57; Sample Tissue: Human Fetal Muscle; Antibody Dilution: 1.0 ug/ml

TMEM57



Rabbit Anti-TMEM57
Sample Type: Human Fetal Lung
Antibody Concentration: 1ug/mL

Host: Rabbit; Target Name: TMEM57; Sample Tissue: Human Fetal Lung; Antibody Dilution: 1.0 ug/ml