

Product datasheet for **TA342360**

HHAT Rabbit Polyclonal Antibody

Product data:

Product Type:	Primary Antibodies
Applications:	WB
Recommended Dilution:	WB
Reactivity:	Human
Host:	Rabbit
Isotype:	IgG
Clonality:	Polyclonal
Immunogen:	The immunogen for anti-HHAT antibody: synthetic peptide directed towards the N terminal of human HHAT. Synthetic peptide located within the following region: MLPRWELALYLLASLGFHFYSFYEVYKVSREHEEELDQEFLETDTLFGG
Formulation:	Liquid. Purified antibody supplied in 1x PBS buffer with 0.09% (w/v) sodium azide and 2% sucrose. <i>Note that this product is shipped as lyophilized powder to China customers.</i>
Conjugation:	Unconjugated
Storage:	Store at -20°C as received.
Stability:	Stable for 12 months from date of receipt.
Predicted Protein Size:	57 kDa
Gene Name:	hedgehog acyltransferase
Database Link:	NP_060664 Entrez Gene 55733 Human Q5VTY9



[View online »](#)

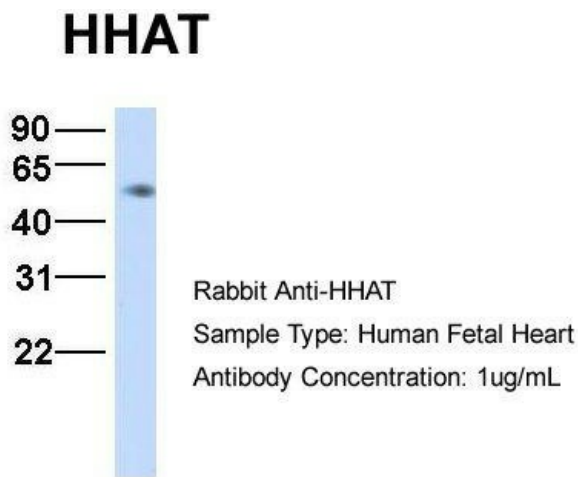
Background: 'Skinny hedgehog' (SKI1) encodes an enzyme that acts within the secretory pathway to catalyze amino-terminal palmitoylation of 'hedgehog' (see MIM 600725). [supplied by OMIM, Jul 2002]. Transcript Variant: This variant (4) lacks an in-frame exon in the coding region compared to variant 1. The encoded isoform (3) is shorter than isoform 1. Sequence Note: This RefSeq record was created from transcript and genomic sequence data to make the sequence consistent with the reference genome assembly. The genomic coordinates used for the transcript record were based on transcript alignments. ##Evidence-Data-START## Transcript exon combination :: AK298991.1 [ECO:0000332] RNAseq introns :: single sample supports all introns ERS025090 [ECO:0000348] ##Evidence-Data-END## COMPLETENESS: complete on the 3' end.

Synonyms: MART2; SKI1; Skn

Note: Immunogen Sequence Homology: Pig: 100%; Rat: 100%; Horse: 100%; Human: 100%; Mouse: 100%; Rabbit: 100%; Guinea pig: 100%; Dog: 79%

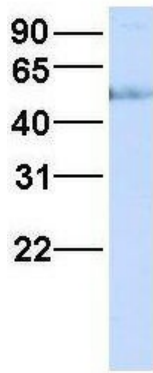
Protein Families: Transmembrane

Product images:



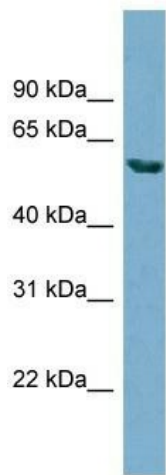
Host: Rabbit; Target Name: HHAT; Sample Tissue: Human Fetal Heart; Antibody Dilution: 1.0 ug/ml

HHAT



Rabbit Anti-HHAT
Sample Type: Human Fetal Liver
Antibody Concentration: 1ug/mL

Host: Rabbit; Target Name: HHAT; Sample Tissue: Human Fetal Liver; Antibody Dilution: 1.0 ug/ml



WB Suggested Anti-HHAT Antibody Titration: 0.2-1 ug/ml; ELISA Titer: 1: 62500; Positive Control: HT1080 cell lysate.HHAT is supported by BioGPS gene expression data to be expressed in HT1080