

Product datasheet for **TA342358**

TMEM33 Rabbit Polyclonal Antibody

Product data:

Product Type:	Primary Antibodies
Applications:	WB
Recommended Dilution:	WB
Reactivity:	Rat
Host:	Rabbit
Isotype:	IgG
Clonality:	Polyclonal
Immunogen:	The immunogen for anti-Tmem33 antibody: synthetic peptide corresponding to a region of Rat. Synthetic peptide located within the following region: LLHAATYTKKVLDAKGSNSLPLLRVLDKLTSTNQNILKFIACNEIFLMP
Formulation:	Liquid. Purified antibody supplied in 1x PBS buffer with 0.09% (w/v) sodium azide and 2% sucrose.
Conjugation:	Unconjugated
Storage:	Store at -20°C as received.
Stability:	Stable for 12 months from date of receipt.
Predicted Protein Size:	28 kDa
Gene Name:	transmembrane protein 33
Database Link:	NP_060596 Entrez Gene 59303 Rat P57088
Background:	putative integral membrane protein [RGD, Feb 2006]. Transcript Variant: This variant (1) represents the longer transcript and encodes the longer protein (isoform 1). Sequence Note: The RefSeq transcript and protein were derived from genomic sequence to make the sequence consistent with the reference genome assembly. The genomic coordinates used for the transcript record were based on alignments. ##Evidence-Data-START## Transcript exon combination :: AB006135.1, CK359233.1 [ECO:0000332] RNAseq introns :: mixed/partial sample support ERS160522, ERS160537 [ECO:0000350] ##Evidence-Data-END##
Synonyms:	1600019D15Rik; SHINC-3; SHINC3

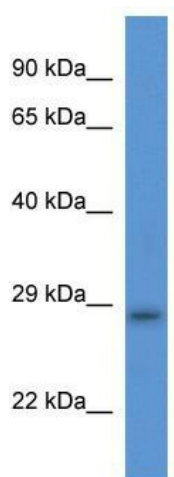


[View online »](#)

Note: Immunogen Sequence Homology: Dog: 100%; Pig: 100%; Rat: 100%; Horse: 100%; Human: 100%; Mouse: 100%; Guinea pig: 100%; Bovine: 92%; Rabbit: 92%; Zebrafish: 92%

Protein Families: Transmembrane

Product images:



WB Suggested Anti-Tmem33 Antibody; Titration: 1.0 ug/ml; Positive Control: Rat Heart