

## Product datasheet for **TA342356**

### **FAR2 Rabbit Polyclonal Antibody**

#### **Product data:**

Product Type:	Primary Antibodies
Applications:	WB
Recommended Dilution:	WB
Reactivity:	Human
Host:	Rabbit
Isotype:	IgG
Clonality:	Polyclonal
Immunogen:	The immunogen for anti-MLSTD1 antibody: synthetic peptide directed towards the C terminal of human MLSTD1. Synthetic peptide located within the following region: WSTYNTEMLMSELSPEQRFVNFVDRQLNWLEYIENYVLGVKKYLLKEDM
Formulation:	Liquid. Purified antibody supplied in 1x PBS buffer with 0.09% (w/v) sodium azide and 2% sucrose. <i>Note that this product is shipped as lyophilized powder to China customers.</i>
Conjugation:	Unconjugated
Storage:	Store at -20°C as received.
Stability:	Stable for 12 months from date of receipt.
Predicted Protein Size:	59 kDa
Gene Name:	fatty acyl-CoA reductase 2
Database Link:	<a href="#">NP_060569</a> <a href="#">Entrez Gene 55711 Human</a> <a href="#">Q96K12</a>
Background:	This gene belongs to the short chain dehydrogenase/reductase superfamily. It encodes a reductase enzyme involved in the first step of wax biosynthesis wherein fatty acids are converted to fatty alcohols. The encoded peroxisomal protein utilizes saturated fatty acids of 16 or 18 carbons as preferred substrates. Alternatively spliced transcript variants have been observed for this gene. Related pseudogenes have been identified on chromosomes 2, 14 and 22. [provided by RefSeq, Nov 2012]
Synonyms:	HEL-S-81; MLSTD1; SDR10E2

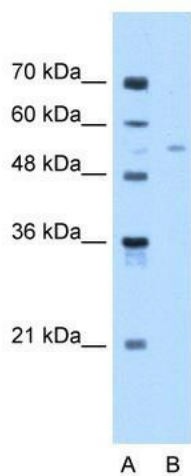


[View online »](#)

**Note:** Immunogen Sequence Homology: Dog: 100%; Pig: 100%; Rat: 100%; Human: 100%; Mouse: 100%; Bovine: 100%; Rabbit: 100%; Horse: 93%; Guinea pig: 93%; Zebrafish: 83%

**Protein Families:** Transmembrane

**Product images:**



WB Suggested Anti-MLSTD1 Antibody Titration:  
0.2-1 ug/ml; Positive Control: Jurkat cell lysate