

Product datasheet for **TA342355**

NETO2 Rabbit Polyclonal Antibody

Product data:

Product Type:	Primary Antibodies
Applications:	IHC, WB
Recommended Dilution:	WB
Reactivity:	Human
Host:	Rabbit
Isotype:	IgG
Clonality:	Polyclonal
Immunogen:	The immunogen for anti-NETO2 antibody: synthetic peptide directed towards the N terminal of human NETO2. Synthetic peptide located within the following region: ELSGADGIVRSSQVEEQEEKTPGQAVDCIWTIKATPKAKIYLRFLDYQME
Formulation:	Liquid. Purified antibody supplied in 1x PBS buffer with 0.09% (w/v) sodium azide and 2% sucrose. <i>Note that this product is shipped as lyophilized powder to China customers.</i>
Conjugation:	Unconjugated
Storage:	Store at -20°C as received.
Stability:	Stable for 12 months from date of receipt.
Predicted Protein Size:	57 kDa
Gene Name:	neuropilin and tolloid like 2
Database Link:	NP_060562 Entrez Gene 81831 Human Q8NC67
Background:	This gene encodes a predicted transmembrane protein containing two extracellular CUB domains followed by a low-density lipoprotein class A (LDL) domain. A similar gene in rats encodes a protein that modulates glutamate signaling in the brain by regulating kainate receptor function. Expression of this gene may be a biomarker for proliferating infantile hemangiomas. A pseudogene of this gene is located on the long arm of chromosome 8. Alternatively spliced transcript variants encoding multiple isoforms have been observed for this gene. [provided by RefSeq, Jan 2011]



[View online »](#)

Synonyms: BTCL2; NEOT2

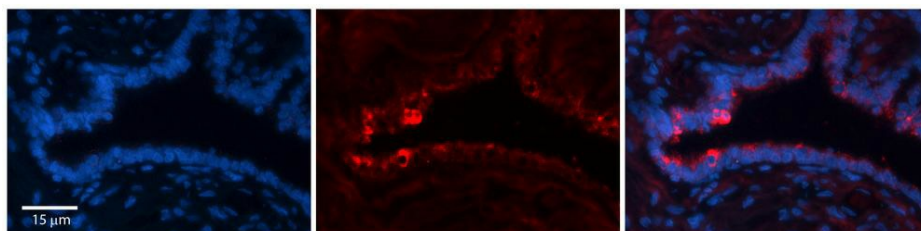
Note: Immunogen Sequence Homology: Dog: 100%; Pig: 100%; Rat: 100%; Human: 100%; Mouse: 100%; Bovine: 100%; Rabbit: 100%; Guinea pig: 100%; Horse: 93%

Protein Families: Druggable Genome, Transmembrane

Product images:



WB Suggested Anti-NETO2 Antibody Titration: 0.2-1 ug/ml; ELISA Titer: 1: 62500; Positive Control: 721_B cell lysate. NETO2 is supported by BioGPS gene expression data to be expressed in 721_B



Rabbit Anti-NETO2 Antibody; Formalin Fixed Paraffin Embedded Tissue: Human Bronchial Epithelial Tissue; Observed Staining: Cytoplasmic; Primary Antibody Concentration: 1: 100; Secondary Antibody: Donkey anti-Rabbit-Cy3; Secondary Antibody Concentration: 1