

## Product datasheet for **TA342353**

### TMEM16K (ANO10) Rabbit Polyclonal Antibody

#### Product data:

Product Type:	Primary Antibodies
Applications:	WB
Recommended Dilution:	WB
Reactivity:	Human
Host:	Rabbit
Isotype:	IgG
Clonality:	Polyclonal
Immunogen:	The immunogen for anti-TMEM16K antibody: synthetic peptide directed towards the C terminal of human TMEM16K. Synthetic peptide located within the following region: LKADIDATLYEQVILEKEMGTYLGTFFDDYLELFLQFGYVSLFSCVYPLAA
Formulation:	Liquid. Purified antibody supplied in 1x PBS buffer with 0.09% (w/v) sodium azide and 2% sucrose. <i>Note that this product is shipped as lyophilized powder to China customers.</i>
Conjugation:	Unconjugated
Storage:	Store at -20°C as received.
Stability:	Stable for 12 months from date of receipt.
Predicted Protein Size:	76 kDa
Gene Name:	anoctamin 10
Database Link:	<a href="#">NP_060545</a> <a href="#">Entrez Gene 55129 Human</a> <a href="#">Q9NW15</a>
Background:	The transmembrane protein encoded by this gene is a member of a family of calcium-activated chloride channels. Defects in this gene may be a cause of autosomal recessive spinocerebellar ataxia-10. Several transcript variants encoding different isoforms have been found for this gene. [provided by RefSeq, Mar 2011]
Synonyms:	SCAR10; TMEM16K
Note:	Immunogen Sequence Homology: Dog: 100%; Pig: 100%; Rat: 100%; Horse: 100%; Human: 100%; Mouse: 100%; Bovine: 100%; Rabbit: 100%; Guinea pig: 100%; Zebrafish: 92%



[View online »](#)

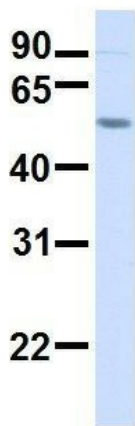
Protein Families: Transmembrane

**Product images:**



WB Suggested Anti-TMEM16K Antibody Titration:  
0.2-1 ug/ml; ELISA Titer: 1: 62500; Positive  
Control: 293T cell lysate

**ANO10**



Rabbit Anti-ANO10  
Sample Type: Human Adult  
Placenta  
Antibody Concentration: 1ug/mL

Host: Rabbit; Target Name: ANO10; Sample  
Tissue: Human Adult Placenta; Antibody Dilution:  
1.0 ug/ml

## ANO10



Rabbit Anti-ANO10  
Sample Type: Human Fetal Heart  
Antibody Concentration: 1ug/mL

Host: Rabbit; Target Name: ANO10; Sample  
Tissue: Human Fetal Heart; Antibody Dilution: 1.0  
ug/ml