

Product datasheet for **TA342351**

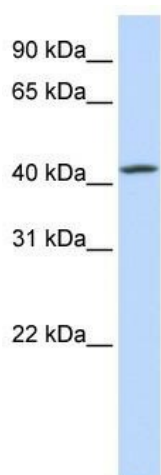
C7orf42 (TMEM248) Rabbit Polyclonal Antibody

Product data:

Product Type:	Primary Antibodies
Applications:	WB
Recommended Dilution:	WB
Reactivity:	Human
Host:	Rabbit
Isotype:	IgG
Clonality:	Polyclonal
Immunogen:	The immunogen for anti-C7orf42 antibody: synthetic peptide directed towards the N terminal of human C7orf42. Synthetic peptide located within the following region: FSINPLENLKVYISSRPPLVVMISVSAMAIAFLTLGYFFKIKEIKSPEM
Formulation:	Liquid. Purified antibody supplied in 1x PBS buffer with 0.09% (w/v) sodium azide and 2% sucrose.
Conjugation:	Unconjugated
Storage:	Store at -20°C as received.
Stability:	Stable for 12 months from date of receipt.
Predicted Protein Size:	35 kDa
Gene Name:	transmembrane protein 248
Database Link:	NP_060464 Entrez Gene 55069 Human Q9NWD8
Background:	The exact function of C7orf42 remains unknown.
Synonyms:	C7orf42
Note:	Immunogen Sequence Homology: Human: 100%; Dog: 93%; Pig: 93%; Rat: 93%; Horse: 93%; Mouse: 93%; Bovine: 93%; Rabbit: 93%; Guinea pig: 93%; Zebrafish: 85%
Protein Families:	Transmembrane



[View online »](#)

Product images:

WB Suggested Anti-C7orf42 Antibody Titration:
0.2-1 ug/ml; ELISA Titer: 1: 12500; Positive
Control: HeLa cell lysate. TMEM248 is supported
by BioGPS gene expression data to be expressed
in HeLa