

Product datasheet for **TA342349**

SUSD4 Rabbit Polyclonal Antibody

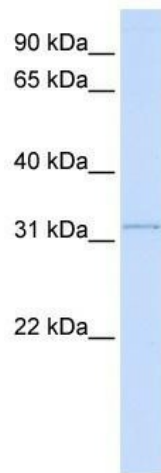
Product data:

Product Type:	Primary Antibodies
Applications:	WB
Recommended Dilution:	WB
Reactivity:	Human
Host:	Rabbit
Isotype:	IgG
Clonality:	Polyclonal
Immunogen:	The immunogen for anti-SUSD4 antibody: synthetic peptide directed towards the N terminal of human SUSD4. Synthetic peptide located within the following region: MYHGMNPSNGDGFLEQQQQQQPQSPQRLAVILWFQLALCFGPAQLTGG
Formulation:	Liquid. Purified antibody supplied in 1x PBS buffer with 0.09% (w/v) sodium azide and 2% sucrose. <i>Note that this product is shipped as lyophilized powder to China customers.</i>
Conjugation:	Unconjugated
Storage:	Store at -20°C as received.
Stability:	Stable for 12 months from date of receipt.
Predicted Protein Size:	32 kDa
Gene Name:	sushi domain containing 4
Database Link:	NP_001032252 Entrez Gene 55061 Human Q5VX71
Background:	SUSD4 contains 4 Sushi (CCP/SCR) domains. It is a single-pass type I membrane protein. The function of the SUSD4 protein remains unknown.
Synonyms:	PRO222
Note:	Immunogen Sequence Homology: Horse: 100%; Human: 100%; Bovine: 100%; Rat: 93%; Mouse: 93%; Yeast: 92%; Rabbit: 85%
Protein Families:	Transmembrane



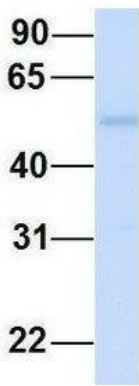
[View online »](#)

Product images:



WB Suggested Anti-SUSD4 Antibody Titration: 0.2-1 ug/ml; ELISA Titer: 1: 12500; Positive Control: Human Lung

SUSD4



Rabbit Anti-SUSD4
Sample Type: Human Fetal Liver
Antibody Concentration: 1ug/mL

Host: Rabbit; Target Name: SUSD4; Sample Tissue: Human Fetal Liver; Antibody Dilution: 1.0 ug/ml