

Product datasheet for **TA342347**

NRIP2 Rabbit Polyclonal Antibody

Product data:

Product Type:	Primary Antibodies
Applications:	WB
Recommended Dilution:	WB
Reactivity:	Human
Host:	Rabbit
Isotype:	IgG
Clonality:	Polyclonal
Immunogen:	The immunogen for anti-NRIP2 antibody: synthetic peptide directed towards the N terminal of mouse NRIP2. Synthetic peptide located within the following region: HLSQQRQLKQATQFLHKDSADLLPLDSLKRLGTSKDLQPHSVIQRRLVEG
Formulation:	Liquid. Purified antibody supplied in 1x PBS buffer with 0.09% (w/v) sodium azide and 2% sucrose. <i>Note that this product is shipped as lyophilized powder to China customers.</i>
Conjugation:	Unconjugated
Storage:	Store at -20°C as received.
Stability:	Stable for 12 months from date of receipt.
Predicted Protein Size:	25 kDa
Gene Name:	nuclear receptor interacting protein 2
Database Link:	NP_113662 Entrez Gene 83714 Human Q9BQI9
Background:	NIX1 holds two copies of the LXXLL motif. NIX1 displays a neuronal specific expression pattern. It selectively interacts with distinct nuclear receptors of the RAR and TR subfamily, but does not bind steroid hormone receptors. By docking to activated nuclear receptors in an AF2-D-dependent fashion, NIX1 might displace coactivators and result in suppression of the transcriptional activity of liganded nuclear receptors.
Synonyms:	DKFZp761G1913

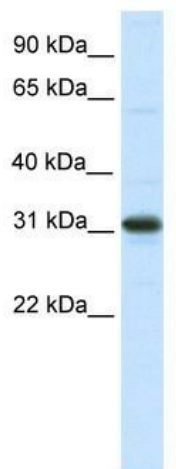


[View online »](#)

Note: Immunogen Sequence Homology: Dog: 100%; Pig: 100%; Rat: 100%; Horse: 100%; Human: 100%; Mouse: 100%; Rabbit: 100%; Bovine: 92%; Zebrafish: 85%

Protein Families: Druggable Genome

Product images:



WB Suggested Anti-NRIP2 Antibody Titration:
0.125 ug/ml; ELISA Titer: 1:312500; Positive
Control: Human Cerebellum