

Product datasheet for TA342345

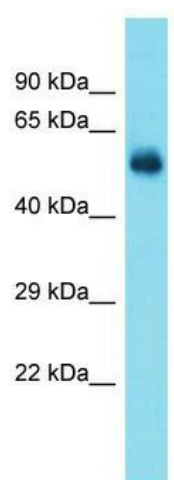
Taf1a Rabbit Polyclonal Antibody

Product data:

Product Type:	Primary Antibodies
Applications:	WB
Recommended Dilution:	WB
Reactivity:	Rat
Host:	Rabbit
Isotype:	IgG
Clonality:	Polyclonal
Immunogen:	The immunogen for anti-Taf1a antibody is: synthetic peptide directed towards the N-terminal region of Rat Taf1a. Synthetic peptide located within the following region: FAQTTSACLSFLQEALLKHQWCRAAEYMHSLYLTLESDTYRKQAAPEII
Formulation:	Liquid. Purified antibody supplied in 1x PBS buffer with 0.09% (w/v) sodium azide and 2% sucrose.
Conjugation:	Unconjugated
Storage:	Store at -20°C as received.
Stability:	Stable for 12 months from date of receipt.
Predicted Protein Size:	49 kDa
Gene Name:	TATA-box binding protein associated factor, RNA polymerase I, A
Database Link:	NP_067441 Entrez Gene 360893 Rat P97357
Background:	Component of the transcription factor SL1/TIF-IB complex, which is involved in the assembly of the PIC (preinitiation complex) during RNA polymerase I-dependent transcription. The rate of PIC formation probably is primarily dependent on the rate of association of SL1/TIF-IB with the rDNA promoter. SL1/TIF-IB is involved in stabilization of nucleolar transcription factor 1/UBTF on rDNA. Formation of SL1/TIF-IB excludes the association of TBP with TFIID subunits.
Synonyms:	MGC:17061; OTTHUMP00000035654; RAFI48; SL1; TAFI48
Note:	Immunogen Sequence Homology: Rat: 100%; Mouse: 100%; Rabbit: 92%; Horse: 91%; Pig: 86%; Guinea pig: 86%


[View online »](#)

Product images:



Host: Rabbit; Target Name: Taf1a; Sample Tissue: Rat Brain lysates; Antibody Dilution: 1.0 ug/ml