

Product datasheet for **TA342344**

Taf1b Rabbit Polyclonal Antibody

Product data:

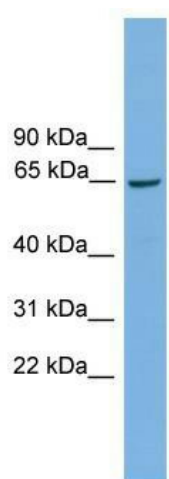
Product Type:	Primary Antibodies
Applications:	WB
Recommended Dilution:	WB
Reactivity:	Mouse
Host:	Rabbit
Isotype:	IgG
Clonality:	Polyclonal
Immunogen:	The immunogen for anti-Taf1b antibody: synthetic peptide directed towards the middle region of mouse Taf1b. Synthetic peptide located within the following region: KYDVQAMAVIVVVLKLLFLLDDKLEWSYSDLAEAYNEQHREDTPQFDFRK
Formulation:	Liquid. Purified antibody supplied in 1x PBS buffer with 0.09% (w/v) sodium azide and 2% sucrose. <i>Note that this product is shipped as lyophilized powder to China customers.</i>
Purification:	Affinity Purified
Conjugation:	Unconjugated
Storage:	Store at -20°C as received.
Stability:	Stable for 12 months from date of receipt.
Predicted Protein Size:	68 kDa
Gene Name:	TATA-box binding protein associated factor, RNA polymerase I, B
Database Link:	NP_065639 Entrez Gene 21340 Mouse P97358
Background:	Component of the transcription factor SL1/TIF-IB complex, which is involved in the assembly of the PIC (preinitiation complex) during RNA polymerase I-dependent transcription. The rate of PIC formation probably is primarily dependent on the rate of association of SL1/TIF-IB with the rDNA promoter. SL1/TIF-IB is involved in stabilization of nucleolar transcription factor 1/UBTF on rDNA. Formation of SL1/TIF-IB excludes the association of TBP with TFIID subunits.
Synonyms:	MGC:9349; RAF1B; RAFI63; SL1; TAFI63



[View online »](#)

Note: Immunogen Sequence Homology: Mouse: 100%; Rat: 79%

Product images:



WB Suggested Anti-Taf1b Antibody Titration: 0.2-1 ug/ml; ELISA Titer: 1:1562500; Positive Control: Mouse Heart