

Product datasheet for **TA342343**

Taf1b Rabbit Polyclonal Antibody

Product data:

Product Type:	Primary Antibodies
Applications:	WB
Recommended Dilution:	WB
Reactivity:	Mouse
Host:	Rabbit
Isotype:	IgG
Clonality:	Polyclonal
Immunogen:	The immunogen for anti-TAF1B antibody: synthetic peptide directed towards the C terminal of mouse TAF1B. Synthetic peptide located within the following region: YQFILNIFSLLRIKTSALHEEVSLLEKLFEEKKYNESKSSGSKKGRRH
Formulation:	Liquid. Purified antibody supplied in 1x PBS buffer with 0.09% (w/v) sodium azide and 2% sucrose.
Conjugation:	Unconjugated
Storage:	Store at -20°C as received.
Stability:	Stable for 12 months from date of receipt.
Predicted Protein Size:	64 kDa
Gene Name:	TATA-box binding protein associated factor, RNA polymerase I, B
Database Link:	NP_065639 Entrez Gene 21340 Mouse P97358
Background:	TAF1b belongs to the family of TATA box binding protein (Tbp)-associated factors. Promoter selectivity for all three classes of eukaryotic RNA polymerases is brought about by multimeric protein complexes containing TATA box binding protein (TBP) and specific TBP-associated factors (TAFs).
Synonyms:	MGC:9349; RAF1B; RAFI63; SL1; TAFI63
Note:	Immunogen Sequence Homology: Mouse: 100%; Rat: 92%; Pig: 82%; Guinea pig: 82%

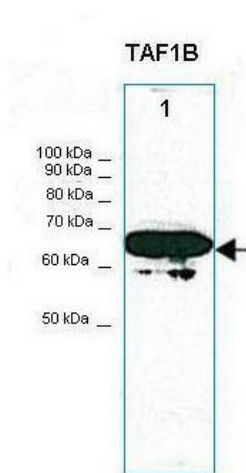


[View online »](#)

Product images:



WB Suggested Anti-TAF1B Antibody Titration:
1.25 ug/ml; ELISA Titer: 1:312500; Positive
Control: SP2/0 cell lysate



Lanes:30ug NIH3T3 cell lysate; Primary Antibody
Dilution: ; 1:1000; Secondary Antibody: ; Anti-
rabbit HRP; Secondary Antibody Dilution: ;
1:5000; Gene Name: ; TAF1B; Submitted by: ;
Thomas Moss;