

## Product datasheet for **TA342342**

### Achaete scute homolog 3 (ASCL3) Rabbit Polyclonal Antibody

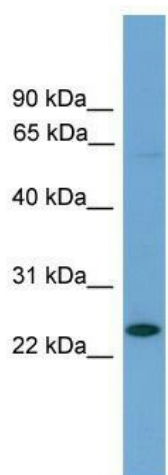
#### Product data:

Product Type:	Primary Antibodies
Applications:	WB
Recommended Dilution:	WB
Reactivity:	Mouse
Host:	Rabbit
Isotype:	IgG
Clonality:	Polyclonal
Immunogen:	The immunogen for anti-Ascl3 antibody: synthetic peptide directed towards the middle region of mouse Ascl3. Synthetic peptide located within the following region: GYARLRRHLPEDYLEKRLSKVETLRAAIKYISYLQSLLYPDESETKKNPR
Formulation:	Liquid. Purified antibody supplied in 1x PBS buffer with 0.09% (w/v) sodium azide and 2% sucrose. <i>Note that this product is shipped as lyophilized powder to China customers.</i>
Conjugation:	Unconjugated
Storage:	Store at -20°C as received.
Stability:	Stable for 12 months from date of receipt.
Predicted Protein Size:	20 kDa
Gene Name:	achaete-scute family bHLH transcription factor 3
Database Link:	<a href="#">NP_065697</a> <a href="#">Entrez Gene 56787 Mouse</a> <a href="#">Q9NQ33</a>
Background:	Transcriptional repressor. Inhibits myogenesis.
Synonyms:	bHLHa42; HASH3; SGN1
Note:	Immunogen Sequence Homology: Mouse: 100%; Rat: 93%; Bovine: 92%; Dog: 85%; Pig: 85%; Human: 85%; Guinea pig: 85%; Horse: 77%



[View online »](#)

## Product images:



WB Suggested Anti-Ascl3 Antibody Titration: 0.2-1 ug/ml; ELISA Titer: 1:1562500; Positive Control: Mouse Muscle