

Product datasheet for **TA342341**

RNF14 Rabbit Polyclonal Antibody

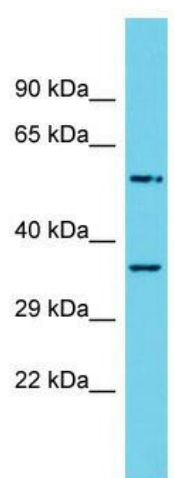
Product data:

Product Type:	Primary Antibodies
Applications:	WB
Recommended Dilution:	WB
Reactivity:	Rat
Host:	Rabbit
Isotype:	IgG
Clonality:	Polyclonal
Immunogen:	The immunogen for anti-Rnf14 antibody is: synthetic peptide directed towards the middle region of Rat Rnf14. Synthetic peptide located within the following region: QASSNTEALALGGAAAAAASDVDQEDSVDERAVQDVESLSLIQEILDFN
Formulation:	Liquid. Purified antibody supplied in 1x PBS buffer with 0.09% (w/v) sodium azide and 2% sucrose. <i>Note that this product is shipped as lyophilized powder to China customers.</i>
Conjugation:	Unconjugated
Storage:	Store at -20°C as received.
Stability:	Stable for 12 months from date of receipt.
Predicted Protein Size:	52 kDa
Gene Name:	ring finger protein 14
Database Link:	NP_899647 Entrez Gene 619577 Rat Q9UBS8
Background:	The function of this protein remains unknown.
Synonyms:	ARA54; HFB30; HRIHFB2038; TRIAD2
Note:	Immunogen Sequence Homology: Mouse: 100%; Dog: 92%; Pig: 92%; Rat: 92%; Horse: 92%; Human: 92%; Bovine: 92%; Rabbit: 92%; Guinea pig: 92%
Protein Families:	Druggable Genome, Transcription Factors



[View online »](#)

Product images:



Host: Rabbit; Target Name: Rnf14; Sample Tissue: Rat Small Intestine lysates; Antibody Dilution: 1.0 ug/ml