

Product datasheet for **TA342337**

RBM14 Rabbit Polyclonal Antibody

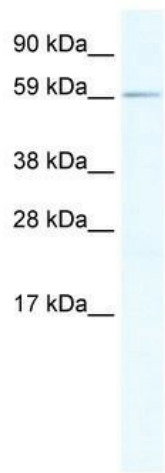
Product data:

Product Type:	Primary Antibodies
Applications:	WB
Recommended Dilution:	WB
Reactivity:	Mouse, Human
Host:	Rabbit
Isotype:	IgG
Clonality:	Polyclonal
Immunogen:	The immunogen for anti-RBM14 antibody: synthetic peptide directed towards the N terminal of mouse RBM14. Synthetic peptide located within the following region: KEADAKAAIAQLNGKEVKGKRINVELSTKGQKKGPALAIQSGDKTKKPGA
Formulation:	Liquid. Purified antibody supplied in 1x PBS buffer with 0.09% (w/v) sodium azide and 2% sucrose. <i>Note that this product is shipped as lyophilized powder to China customers.</i>
Conjugation:	Unconjugated
Storage:	Store at -20°C as received.
Stability:	Stable for 12 months from date of receipt.
Predicted Protein Size:	63 kDa
Gene Name:	RNA binding motif protein 14
Database Link:	NP_006319 Entrez Gene 56275 Mouse Entrez Gene 10432 Human Q96PK6
Background:	May function as a nuclear receptor coactivator, enhancing transcription through other coactivators such as NCOA6 and CITED1.
Synonyms:	COAA; PSP2; SIP; SYTIP1; TMEM137
Note:	Immunogen Sequence Homology: Rat: 100%; Mouse: 100%; Dog: 93%; Pig: 93%; Bovine: 93%; Rabbit: 93%; Human: 86%; Guinea pig: 86%
Protein Families:	Druggable Genome, Stem cell - Pluripotency, Transcription Factors



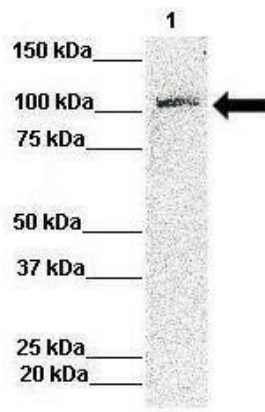
[View online »](#)

Product images:



WB Suggested Anti-RBM14 Antibody Titration:
1.25 ug/ml; ELISA Titer: 1:312500; Positive
Control: SP2/0 cell lysate

RBM14



Lanes: Lane 1: 50ug Hela Lysate; Primary
Antibody Dilution: ; 1:1000; Secondary Antibody: ;
Anti-rabbit-HRP; Secondary Antibody Dilution: ;
1:10,000; Gene Name: ; RBM14; Submitted by: ;
Archa Fox, University of Western Australia;