

## Product datasheet for **TA342335**

### **PUS1 Rabbit Polyclonal Antibody**

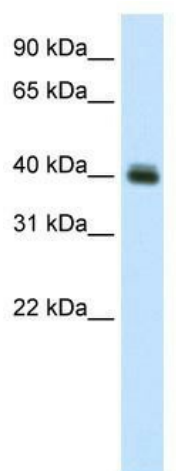
#### **Product data:**

<b>Product Type:</b>	Primary Antibodies
<b>Applications:</b>	WB
<b>Recommended Dilution:</b>	WB
<b>Reactivity:</b>	Mouse
<b>Host:</b>	Rabbit
<b>Isotype:</b>	IgG
<b>Clonality:</b>	Polyclonal
<b>Immunogen:</b>	The immunogen for anti-PUS1 antibody: synthetic peptide corresponding to a region of Mouse. Synthetic peptide located within the following region: PTIVSTERDERSMAQWLNTLPIHNFSGTALGAADTGAKVPSLEGSEGDG
<b>Formulation:</b>	Liquid. Purified antibody supplied in 1x PBS buffer with 0.09% (w/v) sodium azide and 2% sucrose. <i>Note that this product is shipped as lyophilized powder to China customers.</i>
<b>Conjugation:</b>	Unconjugated
<b>Storage:</b>	Store at -20°C as received.
<b>Stability:</b>	Stable for 12 months from date of receipt.
<b>Predicted Protein Size:</b>	43 kDa
<b>Gene Name:</b>	pseudouridylate synthase 1
<b>Database Link:</b>	<a href="#">NP_079491</a> <a href="#">Entrez Gene 56361 Mouse</a> <a href="#">Q9Y606</a>
<b>Background:</b>	Pus1 converts specific uridines to PSI in a number of tRNA substrates. Pus1 acts on positions 27/28 in the anticodon stem and also positions 34 and 36 in the anticodon of an intron containing tRNA. Pus1 is involved in regulation of nuclear receptor activity possibly through pseudouridylation of SRA1 RNA.
<b>Synonyms:</b>	MLASA1
<b>Note:</b>	Immunogen Sequence Homology: Rat: 100%; Mouse: 100%; Human: 92%



[View online »](#)

## Product images:



WB Suggested Anti-PUS1 Antibody Titration: 0.2-1 ug/ml; ELISA Titer: 1:312500; Positive Control: SP2/0 cell lysate