

Product datasheet for **TA342334**

Pus1 Rabbit Polyclonal Antibody

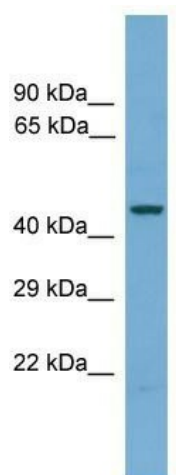
Product data:

Product Type:	Primary Antibodies
Applications:	WB
Recommended Dilution:	WB
Reactivity:	Mouse
Host:	Rabbit
Isotype:	IgG
Clonality:	Polyclonal
Immunogen:	The immunogen for anti-Pus1 antibody: synthetic peptide corresponding to a region of Mouse. Synthetic peptide located within the following region: GGWVWEETEHPAKRVKGGEDEEPPRKLPKRKIVLLMAYSGKGYHGMQRNL
Formulation:	Liquid. Purified antibody supplied in 1x PBS buffer with 0.09% (w/v) sodium azide and 2% sucrose.
Conjugation:	Unconjugated
Storage:	Store at -20°C as received.
Stability:	Stable for 12 months from date of receipt.
Predicted Protein Size:	44 kDa
Gene Name:	pseudouridine synthase 1
Database Link:	NP_001020733 Entrez Gene 56361 Mouse Q9WU56
Background:	Pus1 converts specific uridines to PSI in a number of tRNA substrates. Pus1 acts on positions 27/28 in the anticodon stem and also positions 34 and 36 in the anticodon of an intron containing tRNA. Pus1 is involved in regulation of nuclear receptor activity possibly through pseudouridylation of SRA1 RNA.
Synonyms:	DOBI; MGC11268
Note:	Immunogen Sequence Homology: Rat: 100%; Mouse: 100%



[View online »](#)

Product images:



WB Suggested Anti-Pus1 Antibody Titration: 0.2-1 ug/ml; Positive Control: Mouse Kidney