

Product datasheet for **TA342333**

Elf4 Rabbit Polyclonal Antibody

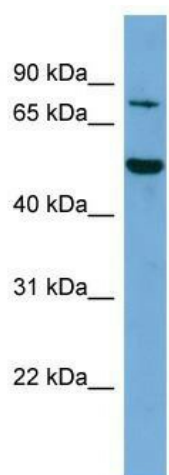
Product data:

| | |
|-------------------------|--|
| Product Type: | Primary Antibodies |
| Applications: | WB |
| Recommended Dilution: | WB |
| Reactivity: | Mouse |
| Host: | Rabbit |
| Isotype: | IgG |
| Clonality: | Polyclonal |
| Immunogen: | The immunogen for anti-Elf4 antibody: synthetic peptide corresponding to a region of Mouse. Synthetic peptide located within the following region: DDLKKTSDAGDQKEHSEEEKVSREENLRKMGKARKRNRKTKNNRSTSPVT |
| Formulation: | Liquid. Purified antibody supplied in 1x PBS buffer with 0.09% (w/v) sodium azide and 2% sucrose. <i>Note that this product is shipped as lyophilized powder to China customers.</i> |
| Conjugation: | Unconjugated |
| Storage: | Store at -20°C as received. |
| Stability: | Stable for 12 months from date of receipt. |
| Predicted Protein Size: | 71 kDa |
| Gene Name: | E74-like factor 4 (ets domain transcription factor) |
| Database Link: | NP_062654 Entrez Gene 56501 Mouse Q9Z2U4 |
| Background: | The function of Elf4 remains unknown. |
| Synonyms: | ELFR; MEF |
| Note: | Immunogen Sequence Homology: Mouse: 100%; Rat: 85% |



[View online »](#)

Product images:



WB Suggested Anti-Elf4 Antibody Titration: 0.2-1 ug/ml; ELISA Titer: 1:312500; Positive Control: NIH/3T3 cell lysate