

## Product datasheet for TA342331

### Cited4 Rabbit Polyclonal Antibody

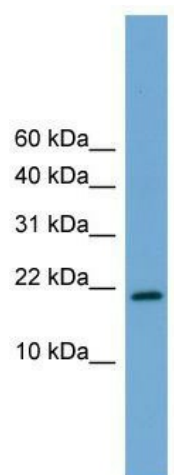
#### Product data:

Product Type:	Primary Antibodies
Applications:	WB
Recommended Dilution:	WB
Reactivity:	Mouse
Host:	Rabbit
Isotype:	IgG
Clonality:	Polyclonal
Immunogen:	The immunogen for anti-Cited4 antibody: synthetic peptide corresponding to a region of Mouse. Synthetic peptide located within the following region: PPPPGTLAYGSGSPVFSQFPVVSQSPGAGSTHLQSAATPSPGRIPAPPA
Formulation:	Liquid. Purified antibody supplied in 1x PBS buffer with 0.09% (w/v) sodium azide and 2% sucrose. <i>Note that this product is shipped as lyophilized powder to China customers.</i>
Conjugation:	Unconjugated
Storage:	Store at -20°C as received.
Stability:	Stable for 12 months from date of receipt.
Predicted Protein Size:	18 kDa
Gene Name:	Cbp/p300-interacting transactivator, with Glu/Asp-rich carboxy-terminal domain, 4
Database Link:	<a href="#">NP_062509</a> <a href="#">Entrez Gene 56222 Mouse</a> <a href="#">Q9WUL8</a>
Background:	Cited4 acts as transcriptional coactivator for TFAP2/AP-2. Cited4 may function as an inhibitor of transactivation by HIF1A by disrupting HIF1A interaction with CREBBP. Cited4 may be involved in regulation of gene expression during development and differentiation of blood cells, endothelial cells and mammary epithelial cells.
Synonyms:	MRG-2; MRG2
Note:	Immunogen Sequence Homology: Mouse: 100%; Rat: 85%



[View online »](#)

## Product images:



WB Suggested Anti-Cited4 Antibody Titration: 0.2-1 ug/ml; Positive Control: Mouse Heart