

## Product datasheet for **TA342329**

### **TBX21 Rabbit Polyclonal Antibody**

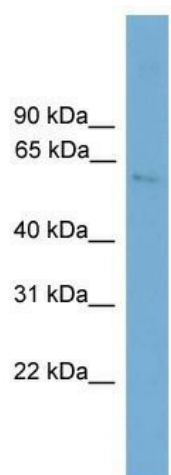
#### **Product data:**

Product Type:	Primary Antibodies
Applications:	WB
Recommended Dilution:	WB
Reactivity:	Mouse
Host:	Rabbit
Isotype:	IgG
Clonality:	Polyclonal
Immunogen:	The immunogen for anti-Tbx21 antibody: synthetic peptide corresponding to a region of Mouse. Synthetic peptide located within the following region: MGIVEPGCGDMLTGTEPMPSDEGRGPGADQQRFFYPEPGAQDPTDRRAG
Formulation:	Liquid. Purified antibody supplied in 1x PBS buffer with 0.09% (w/v) sodium azide and 2% sucrose. <i>Note that this product is shipped as lyophilized powder to China customers.</i>
Conjugation:	Unconjugated
Storage:	Store at -20°C as received.
Stability:	Stable for 12 months from date of receipt.
Predicted Protein Size:	58 kDa
Gene Name:	T-box 21
Database Link:	<a href="#">NP_037483</a> <a href="#">Entrez Gene 57765 Mouse</a> <a href="#">Q9UL17</a>
Background:	Transcription factor that controls the expression of the TH1 cytokine, interferon-gamma. Initiates TH1 lineage development from naive TH precursor cells both by activating TH1 genetic programs and by repressing the opposing TH2 programs.
Synonyms:	T-bet; T-PET; TBET; TBLYM
Note:	Immunogen Sequence Homology: Mouse: 100%; Rat: 93%; Human: 86%; Rabbit: 86%; Dog: 79%; Pig: 79%; Bovine: 79%
Protein Families:	Druggable Genome, Transcription Factors



[View online »](#)

## Product images:



WB Suggested Anti-Tbx21 Antibody Titration: 0.2-1 ug/ml; Positive Control: NIH/3T3 cell lysate