

## Product datasheet for **TA342327**

### IRX5 Rabbit Polyclonal Antibody

#### Product data:

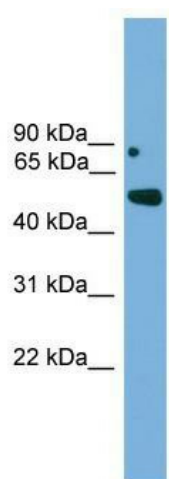
Product Type:	Primary Antibodies
Applications:	WB
Recommended Dilution:	WB
Reactivity:	Mouse
Host:	Rabbit
Isotype:	IgG
Clonality:	Polyclonal
Immunogen:	The immunogen for anti-Irx5 antibody: synthetic peptide directed towards the middle region of mouse Irx5. Synthetic peptide located within the following region: ENIDLEKNDDEPQKPEDKGDLEGPESSGAEQKATAGCERLQGPLSPAGK
Formulation:	Liquid. Purified antibody supplied in 1x PBS buffer with 0.09% (w/v) sodium azide and 2% sucrose. <i>Note that this product is shipped as lyophilized powder to China customers.</i>
Conjugation:	Unconjugated
Storage:	Store at -20°C as received.
Stability:	Stable for 12 months from date of receipt.
Predicted Protein Size:	51 kDa
Gene Name:	iroquois homeobox 5
Database Link:	<a href="#">NP_005844</a> <a href="#">Entrez Gene 54352 Mouse P78411</a>
Background:	Irx5 establishes the cardiac repolarization gradient by its repressive actions on the KCND2 potassium-channel gene. Irx5 is required for retinal cone bipolar cell differentiation. Irx5 may regulate contrast adaptation in the retina and control specific aspects of visual function in circuits of the mammalian retina.
Synonyms:	HMMS; IRX-2a; IRXB2
Note:	Immunogen Sequence Homology: Rat: 100%; Horse: 100%; Mouse: 100%; Pig: 93%; Human: 93%; Bovine: 93%; Dog: 92%; Rabbit: 86%; Guinea pig: 86%



[View online »](#)

Protein Families: Transcription Factors

### Product images:



WB Suggested Anti-Irx5 Antibody Titration: 0.2-1 ug/ml; ELISA Titer: 1:62500; Positive Control: NIH/3T3 cell lysate