

## Product datasheet for **TA342326**

### PTF1A Rabbit Polyclonal Antibody

#### Product data:

Product Type:	Primary Antibodies
Applications:	WB
Recommended Dilution:	WB
Reactivity:	Mouse
Host:	Rabbit
Isotype:	IgG
Clonality:	Polyclonal
Immunogen:	The immunogen for anti-Ptf1a antibody is: synthetic peptide directed towards the N-terminal region of Mouse Ptf1a. Synthetic peptide located within the following region: FPSPYFDEEDFFTDQSSRDPLEDSDELLGDEQAEVEFLSHQLHEYCYRDG
Formulation:	Liquid. Purified antibody supplied in 1x PBS buffer with 0.09% (w/v) sodium azide and 2% sucrose. <i>Note that this product is shipped as lyophilized powder to China customers.</i>
Conjugation:	Unconjugated
Storage:	Store at -20°C as received.
Stability:	Stable for 12 months from date of receipt.
Predicted Protein Size:	35 kDa
Gene Name:	pancreas specific transcription factor, 1a
Database Link:	<a href="#">NP_835455</a> <a href="#">Entrez Gene 19213 Mouse</a> <a href="#">Q7RTS3</a>
Background:	Ptf1a is a transcriptional activator. It binds to the E-box consensus sequence 5'-CANNTG-3' and may play a role in early and late pancreas development and differentiation. Ptf1a plays an important role in determining whether cells allocated to the pancreatic buds continue towards pancreatic organogenesis or revert back to duodenal fates and may be involved in the maintenance of exocrine pancreas-specific gene expression including ELA1 and amylase. It is required for the formation of pancreatic acinar and ductal cells. and plays an important role in cerebellar development.



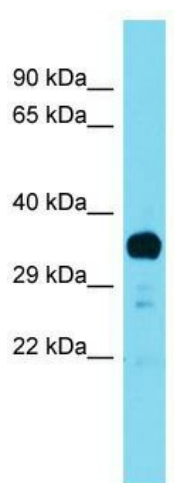
[View online »](#)

**Synonyms:** bHLHa29; PACA; PAGEN2; PTF1-p48

**Note:** Immunogen Sequence Homology: Mouse: 100%; Pig: 93%; Rat: 93%; Human: 93%; Bovine: 93%; Horse: 92%; Dog: 86%

**Protein Families:** Embryonic stem cells, ES Cell Differentiation/IPS

**Product images:**



Host: Rabbit; Target Name: Ptf1a; Sample Tissue: Mouse Testis lysates; Antibody Dilution: 1.0 ug/ml