

Product datasheet for TA342324

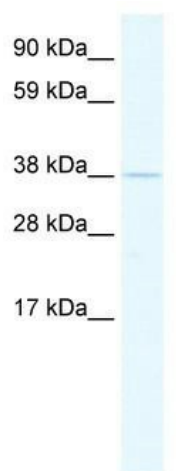
TEF Rabbit Polyclonal Antibody

Product data:

Product Type:	Primary Antibodies
Applications:	WB
Recommended Dilution:	WB
Reactivity:	Mouse
Host:	Rabbit
Isotype:	IgG
Clonality:	Polyclonal
Immunogen:	The immunogen for anti-TEF antibody: synthetic peptide directed towards the N terminal of mouse TEF. Synthetic peptide located within the following region: MSDAGGGKKPPVEPQAGPGGRAAGERGLSGSFPLVLKMLMENPPRETRL
Formulation:	Liquid. Purified antibody supplied in 1x PBS buffer with 0.09% (w/v) sodium azide and 2% sucrose.
Conjugation:	Unconjugated
Storage:	Store at -20°C as received.
Stability:	Stable for 12 months from date of receipt.
Predicted Protein Size:	33 kDa
Gene Name:	TEF, PAR bZIP transcription factor
Database Link:	NP_003207 Entrez Gene 21685 Mouse Q10587
Background:	Transcription factor that binds to and transactivates the TSHB promoter. Binds to a minimal DNA-binding sequence 5'-[TC][AG][AG]TTA[TC][AG]-3' (By similarity). Also activates the telokin promoter in smooth muscle-specific and calcium-dependent manner.
Synonyms:	KIAA1655
Note:	Immunogen Sequence Homology: Dog: 100%; Mouse: 100%; Sheep: 100%; Bovine: 100%; Pig: 93%; Rat: 93%; Human: 93%; Guinea pig: 93%
Protein Families:	Transcription Factors


[View online »](#)

Product images:



WB Suggested Anti-TEF Antibody Titration: 2.5 ug/ml; ELISA Titer: 1:1562500; Positive Control: NIH/3T3 cell lysate