

Product datasheet for **TA342323**

ATP6V0A1 Rabbit Polyclonal Antibody

Product data:

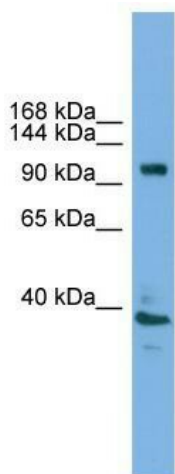
Product Type:	Primary Antibodies
Applications:	WB
Recommended Dilution:	WB, IF
Reactivity:	Mouse, Human
Host:	Rabbit
Isotype:	IgG
Clonality:	Polyclonal
Immunogen:	The immunogen for anti-Atp6v0a1 antibody: synthetic peptide corresponding to a region of Mouse. Synthetic peptide located within the following region: TLNFGGIRVGNPTEEDAEIIHQDQLSTHSEDAEPTEDVDFDGMVH
Formulation:	Liquid. Purified antibody supplied in 1x PBS buffer with 0.09% (w/v) sodium azide and 2% sucrose. <i>Note that this product is shipped as lyophilized powder to China customers.</i>
Conjugation:	Unconjugated
Storage:	Store at -20°C as received.
Stability:	Stable for 12 months from date of receipt.
Predicted Protein Size:	96 kDa
Gene Name:	ATPase H ⁺ transporting V0 subunit a1
Database Link:	NP_005168 Entrez Gene 11975 Mouse Entrez Gene 535 Human Q93050
Background:	Required for assembly and activity of the vacuolar ATPase. Potential role in differential targeting and regulation of the enzyme for a specific organelle.
Synonyms:	a1; ATP6N1; ATP6N1A; Stv1; Vph1; VPP1
Note:	Immunogen Sequence Homology: Pig: 100%; Rat: 100%; Mouse: 100%; Bovine: 100%; Horse: 93%; Rabbit: 93%; Human: 86%
Protein Families:	Transmembrane



[View online »](#)

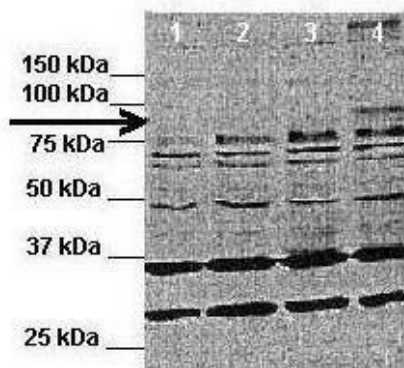
Protein Pathways: Epithelial cell signaling in Helicobacter pylori infection, Lysosome, Metabolic pathways, Oxidative phosphorylation, Vibrio cholerae infection

Product images:



WB Suggested Anti-Atp6v0a1 Antibody Titration: 0.2-1 ug/ml; Positive Control: Mouse Uterus

ATP6V0A1



Application: Western blotting; Species+tissue/cell type: HeLa cells; How many ug's of tissue/cell lysate run on the gel: 1. 10 ug untransfected HeLa lysate 2. 10 ug mATP6V0A2 (Partial) transfected HeLa lysate 3. 10 ug mATP6V0A2-FLAG transfected HeLa lysate 4.