

## Product datasheet for TA342322

### Atoh7 Rabbit Polyclonal Antibody

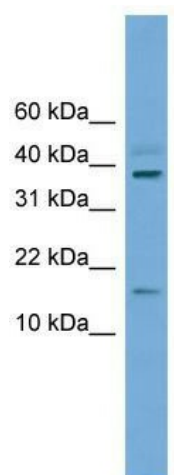
#### Product data:

Product Type:	Primary Antibodies
Applications:	WB
Recommended Dilution:	WB
Reactivity:	Mouse
Host:	Rabbit
Isotype:	IgG
Clonality:	Polyclonal
Immunogen:	The immunogen for anti-Atoh7 antibody: synthetic peptide directed towards the C terminal of mouse Atoh7. Synthetic peptide located within the following region: IALTRILAEAERDWWGLRCEQRGRDHPYLPFPGARLQVDPEPYGQRLFGF
Formulation:	Liquid. Purified antibody supplied in 1x PBS buffer with 0.09% (w/v) sodium azide and 2% sucrose.
Conjugation:	Unconjugated
Storage:	Store at -20°C as received.
Stability:	Stable for 12 months from date of receipt.
Predicted Protein Size:	16 kDa
Gene Name:	atonal bHLH transcription factor 7
Database Link:	<a href="#">NP_058560</a> <a href="#">Entrez Gene 53404 Mouse</a> <a href="#">Q9Z2E5</a>
Background:	Atoh7 is a transcription factor involved in the differentiation of most retinal ganglion cells, including those constituting the retino-hypothalamic tract.
Synonyms:	bHLHa13; Math5
Note:	Immunogen Sequence Homology: Mouse: 100%; Rat: 86%



[View online »](#)

## Product images:



WB Suggested Anti-Atoh7 Antibody Titration: 0.2-1 ug/ml; Positive Control: Mouse Heart