

Product datasheet for **TA342320**

MYBBP1A Rabbit Polyclonal Antibody

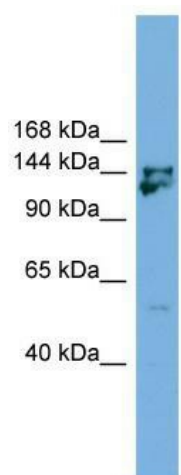
Product data:

Product Type:	Primary Antibodies
Applications:	WB
Recommended Dilution:	WB
Reactivity:	Mouse
Host:	Rabbit
Isotype:	IgG
Clonality:	Polyclonal
Immunogen:	The immunogen for anti-Mybbp1a antibody: synthetic peptide directed towards the middle region of mouse Mybbp1a. Synthetic peptide located within the following region: EKKNAKDIPSDTQSPVSTKRKKKGFLPETKKRKKLKSEGTTPEKNAASQQ
Formulation:	Liquid. Purified antibody supplied in 1x PBS buffer with 0.09% (w/v) sodium azide and 2% sucrose. <i>Note that this product is shipped as lyophilized powder to China customers.</i>
Conjugation:	Unconjugated
Storage:	Store at -20°C as received.
Stability:	Stable for 12 months from date of receipt.
Predicted Protein Size:	152 kDa
Gene Name:	MYB binding protein 1a
Database Link:	NP_055335 Entrez Gene 18432 Mouse Q9BQG0
Background:	Mybbp1a may activate or repress transcription via interactions with sequence specific DNA-binding proteins. Repression may be mediated at least in part by histone deacetylase activity.
Synonyms:	P160; PAP2
Note:	Immunogen Sequence Homology: Rat: 100%; Mouse: 100%; Dog: 92%; Pig: 92%; Horse: 92%; Human: 86%; Bovine: 79%
Protein Families:	Stem cell - Pluripotency, Transcription Factors



[View online »](#)

Product images:



WB Suggested Anti-Mybbp1a Antibody Titration:
0.2-1 ug/ml; ELISA Titer: 1:62500; Positive Control:
Mouse Thymus