

Product datasheet for **TA342319**

Mybbp1a Rabbit Polyclonal Antibody

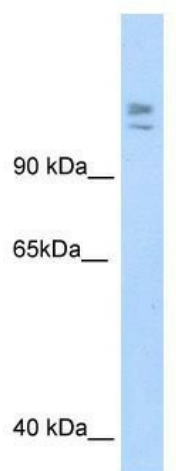
Product data:

Product Type:	Primary Antibodies
Applications:	IHC, WB
Recommended Dilution:	WB, IHC
Reactivity:	Mouse
Host:	Rabbit
Isotype:	IgG
Clonality:	Polyclonal
Immunogen:	The immunogen for anti-MYBBP1A antibody: synthetic peptide directed towards the C terminal of mouse MYBBP1A. Synthetic peptide located within the following region: DAVTEGAMPAATGKDQPSTGKKRKRKRVKASTPSQVNGITGAKSPAPSNP
Formulation:	Liquid. Purified antibody supplied in 1x PBS buffer with 0.09% (w/v) sodium azide and 2% sucrose. <i>Note that this product is shipped as lyophilized powder to China customers.</i>
Conjugation:	Unconjugated
Storage:	Store at -20°C as received.
Stability:	Stable for 12 months from date of receipt.
Predicted Protein Size:	148 kDa
Gene Name:	MYB binding protein (P160) 1a
Database Link:	NP_058056 Entrez Gene 18432 Mouse Q7TPV4
Background:	Mybbp1a may activate or repress transcription via interactions with sequence specific DNA-binding proteins. Repression may be mediated at least in part by histone deacetylase activity.
Synonyms:	FLJ37886; P160; PAP2
Note:	Immunogen Sequence Homology: Mouse: 100%; Rat: 92%; Pig: 83%; Guinea pig: 83%

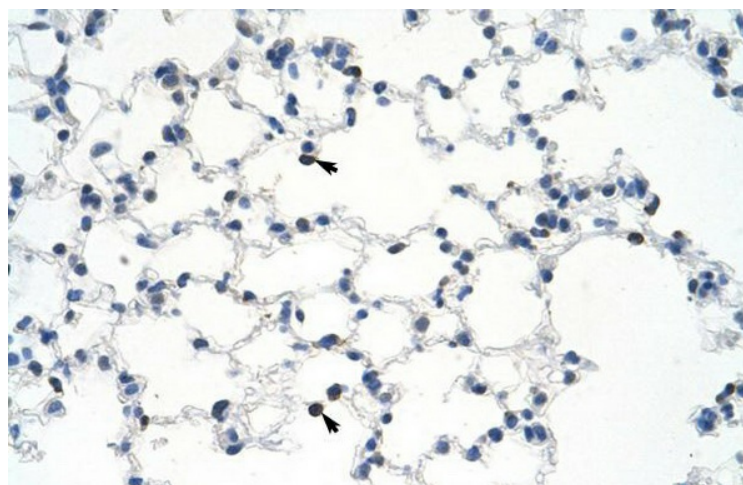


[View online »](#)

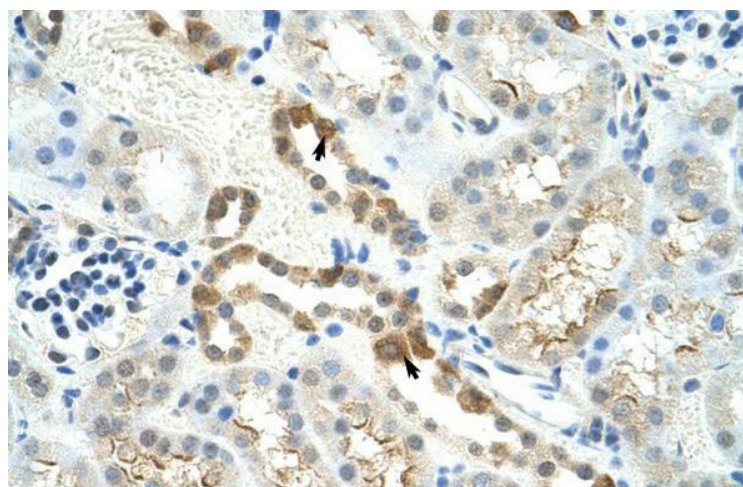
Product images:



WB Suggested Anti-MYBBP1A Antibody Titration:
1.25 ug/ml; Positive Control: SP2/O cell lysate



Mouse Kidney



Mouse Lung