

Product datasheet for **TA342315**

Dmrt1 Rabbit Polyclonal Antibody

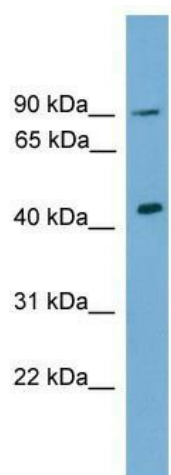
Product data:

Product Type:	Primary Antibodies
Applications:	WB
Recommended Dilution:	WB
Reactivity:	Mouse
Host:	Rabbit
Isotype:	IgG
Clonality:	Polyclonal
Immunogen:	The immunogen for anti-Dmrt1 antibody: synthetic peptide corresponding to a region of Mouse. Synthetic peptide located within the following region: VFSPSSQDSGLVLSSSSPMSNESSKGVLECEASSEPSSYAVNQVLEE
Formulation:	Liquid. Purified antibody supplied in 1x PBS buffer with 0.09% (w/v) sodium azide and 2% sucrose. <i>Note that this product is shipped as lyophilized powder to China customers.</i>
Conjugation:	Unconjugated
Storage:	Store at -20°C as received.
Stability:	Stable for 12 months from date of receipt.
Predicted Protein Size:	39 kDa
Gene Name:	doublesex and mab-3 related transcription factor 1
Database Link:	NP_056641 Entrez Gene 50796 Mouse Q9QZ59
Background:	The function of this protein remains unknown.
Synonyms:	DMT1
Note:	Immunogen Sequence Homology: Rat: 100%; Mouse: 100%



[View online »](#)

Product images:



WB Suggested Anti-Dmrt1 Antibody Titration: 0.2-1 ug/ml; Positive Control: NIH/3T3 cell lysate