

Product datasheet for **TA342314**

NOR1 (NR4A3) Rabbit Polyclonal Antibody

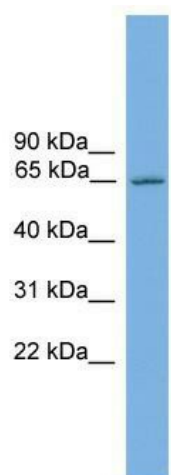
Product data:

Product Type:	Primary Antibodies
Applications:	WB
Recommended Dilution:	WB
Reactivity:	Mouse
Host:	Rabbit
Isotype:	IgG
Clonality:	Polyclonal
Immunogen:	The immunogen for anti-Nr4a3 antibody: synthetic peptide corresponding to a region of Mouse. Synthetic peptide located within the following region: KEPKRVEELCTKITSSLKDHQRKGQALEPSEPKVLRALVELRKICTQGLQ
Formulation:	Liquid. Purified antibody supplied in 1x PBS buffer with 0.09% (w/v) sodium azide and 2% sucrose. <i>Note that this product is shipped as lyophilized powder to China customers.</i>
Conjugation:	Unconjugated
Storage:	Store at -20°C as received.
Stability:	Stable for 12 months from date of receipt.
Predicted Protein Size:	68 kDa
Gene Name:	nuclear receptor subfamily 4 group A member 3
Database Link:	NP_008912 Entrez Gene 18124 Mouse Q92570
Background:	Binds to the B1A response-element.
Synonyms:	CHN; CSMF; MINOR; NOR1; TEC
Note:	Immunogen Sequence Homology: Rat: 100%; Mouse: 100%; Pig: 93%; Horse: 93%; Human: 93%; Guinea pig: 93%; Bovine: 86%; Rabbit: 86%
Protein Families:	Druggable Genome, Nuclear Hormone Receptor, Transcription Factors



[View online »](#)

Product images:



WB Suggested Anti-Nr4a3 Antibody Titration: 0.2-1 ug/ml; Positive Control: Mouse Brain