

Product datasheet for **TA342313**

Gbx1 Rabbit Polyclonal Antibody

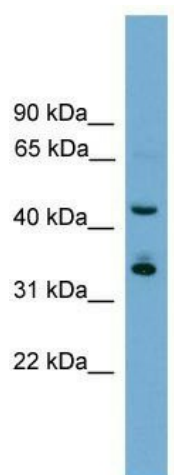
Product data:

Product Type:	Primary Antibodies
Applications:	WB
Recommended Dilution:	WB
Reactivity:	Mouse
Host:	Rabbit
Isotype:	IgG
Clonality:	Polyclonal
Immunogen:	The immunogen for anti-Gbx1 antibody: synthetic peptide corresponding to a region of Mouse. Synthetic peptide located within the following region: RGARRGPGSAMQRAAGGGAPGGSGGSSGGPGAFAFSIDSLIGPPPPRSGHL
Formulation:	Liquid. Purified antibody supplied in 1x PBS buffer with 0.09% (w/v) sodium azide and 2% sucrose.
Conjugation:	Unconjugated
Storage:	Store at -20°C as received.
Stability:	Stable for 12 months from date of receipt.
Predicted Protein Size:	44 kDa
Gene Name:	gastrulation brain homeobox 1
Database Link:	NP_056554 Entrez Gene 231044 Mouse P82976
Background:	The function of this protein remains unknown.
Synonyms:	Gbx1
Note:	Immunogen Sequence Homology: Rat: 100%; Mouse: 100%; Dog: 92%; Pig: 92%



[View online »](#)

Product images:



WB Suggested Anti-Gbx1 Antibody Titration: 0.2-1 ug/ml; ELISA Titer: 1:312500; Positive Control: Mouse liver