

## Product datasheet for **TA342312**

### Abt1 Rabbit Polyclonal Antibody

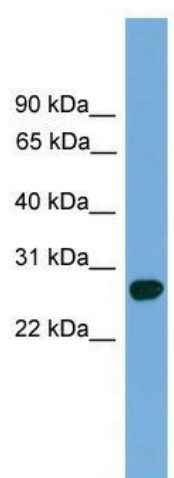
#### Product data:

Product Type:	Primary Antibodies
Applications:	WB
Recommended Dilution:	WB
Reactivity:	Mouse
Host:	Rabbit
Isotype:	IgG
Clonality:	Polyclonal
Immunogen:	The immunogen for anti-Abt1 antibody: synthetic peptide directed towards the c terminal of mouse Abt1. Synthetic peptide located within the following region: QEFRARKAARPGGRERARLANVEDQARSNRGLLAKIFGAPLPAESKEKP
Formulation:	Liquid. Purified antibody supplied in 1x PBS buffer with 0.09% (w/v) sodium azide and 2% sucrose. <i>Note that this product is shipped as lyophilized powder to China customers.</i>
Conjugation:	Unconjugated
Storage:	Store at -20°C as received.
Stability:	Stable for 12 months from date of receipt.
Predicted Protein Size:	31 kDa
Gene Name:	activator of basal transcription 1
Database Link:	<a href="#">NP_038952</a> <a href="#">Entrez Gene 30946 Mouse</a> <a href="#">Q9QYL7</a>
Background:	Could be a novel TATA-binding protein (TBP) which can function as a basal transcription activator. Can act as a regulator of basal transcription for class II genes.
Synonyms:	hABT1
Note:	Immunogen Sequence Homology: Dog: 100%; Mouse: 100%; Bovine: 93%; Rabbit: 93%; Pig: 86%; Rat: 86%; Horse: 86%; Guinea pig: 79%



[View online »](#)

## Product images:



WB Suggested Anti-Abt1 Antibody Titration: 0.2-1 ug/ml; ELISA Titer: 1:62500; Positive Control: Mouse Small Intestine