

Product datasheet for **TA342311**

Activator of basal transcription 1 (ABT1) Rabbit Polyclonal Antibody

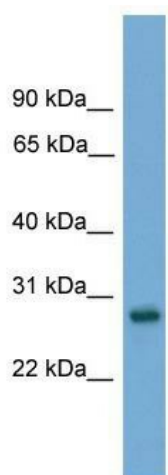
Product data:

Product Type:	Primary Antibodies
Applications:	WB
Recommended Dilution:	WB
Reactivity:	Mouse
Host:	Rabbit
Isotype:	IgG
Clonality:	Polyclonal
Immunogen:	The immunogen for anti-Abt1 antibody: synthetic peptide directed towards the middle region of mouse Abt1. Synthetic peptide located within the following region: RQRLRAEVAQAKRETDYLRNVEQGHFLAADGDATRPNSSWTFTQRPTE
Formulation:	Liquid. Purified antibody supplied in 1x PBS buffer with 0.09% (w/v) sodium azide and 2% sucrose. <i>Note that this product is shipped as lyophilized powder to China customers.</i>
Conjugation:	Unconjugated
Storage:	Store at -20°C as received.
Stability:	Stable for 12 months from date of receipt.
Predicted Protein Size:	31 kDa
Gene Name:	activator of basal transcription 1
Database Link:	NP_037507 Entrez Gene 30946 Mouse Q9ULW3
Background:	Could be a novel TATA-binding protein (TBP) which can function as a basal transcription activator. Can act as a regulator of basal transcription for class II genes.
Synonyms:	hABT1
Note:	Immunogen Sequence Homology: Mouse: 100%; Rat: 93%; Pig: 92%; Guinea pig: 92%; Horse: 83%; Human: 83%; Bovine: 79%; Rabbit: 79%
Protein Families:	Transcription Factors



[View online »](#)

Product images:



WB Suggested Anti-Abt1 Antibody Titration: 0.2-1 ug/ml; ELISA Titer: 1:12500; Positive Control: Mouse Small Intestine