

Product datasheet for **TA342309**

SNAI3 Rabbit Polyclonal Antibody

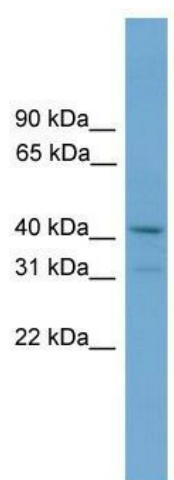
Product data:

Product Type:	Primary Antibodies
Applications:	WB
Recommended Dilution:	WB
Reactivity:	Mouse, Human
Host:	Rabbit
Isotype:	IgG
Clonality:	Polyclonal
Immunogen:	The immunogen for anti-Snai3 antibody: synthetic peptide directed towards the n terminal of mouse Snai3. Synthetic peptide located within the following region: MPRSFLVKTHSSHRVPNYGKLETLREANGSCSACKELAGSRHLPDEEAPC
Formulation:	Liquid. Purified antibody supplied in 1x PBS buffer with 0.09% (w/v) sodium azide and 2% sucrose. <i>Note that this product is shipped as lyophilized powder to China customers.</i>
Conjugation:	Unconjugated
Storage:	Store at -20°C as received.
Stability:	Stable for 12 months from date of receipt.
Predicted Protein Size:	32 kDa
Gene Name:	snail family transcriptional repressor 3
Database Link:	NP_840101 Entrez Gene 30927 Mouse Entrez Gene 333929 Human Q3KNW1
Background:	Snai3 seems to inhibit myoblast differentiation. Snai3 is a transcriptional repressor of E-box-dependent transactivation of downstream myogenic bHLHs genes. Snai3 binds preferentially to the canonical E-box sequences 5'-CAGGTG-3' and 5'-CACCTG-3'.
Synonyms:	SMUC; SNAIL3; Zfp293; ZNF293
Note:	Immunogen Sequence Homology: Rat: 100%; Mouse: 100%; Bovine: 93%; Human: 86%; Rabbit: 85%



[View online »](#)

Product images:



WB Suggested Anti-Snai3 Antibody Titration: 0.2-1 ug/ml; ELISA Titer: 1:312500; Positive Control: Mouse Uterus