

Product datasheet for **TA342308**

BARX2 Rabbit Polyclonal Antibody

Product data:

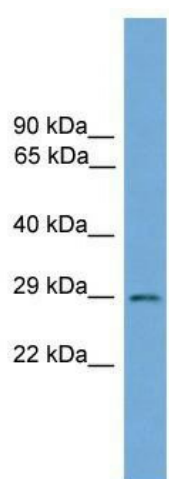
Product Type:	Primary Antibodies
Applications:	WB
Recommended Dilution:	WB
Reactivity:	Mouse
Host:	Rabbit
Isotype:	IgG
Clonality:	Polyclonal
Immunogen:	The immunogen for anti-Barx2 antibody: synthetic peptide corresponding to a region of Mouse. Synthetic peptide located within the following region: LSKETCDYFEKLSLYSVCPSLVVRPKPLHSCTGSPSLRAYPLLSVITRQP
Formulation:	Liquid. Purified antibody supplied in 1x PBS buffer with 0.09% (w/v) sodium azide and 2% sucrose. <i>Note that this product is shipped as lyophilized powder to China customers.</i>
Conjugation:	Unconjugated
Storage:	Store at -20°C as received.
Stability:	Stable for 12 months from date of receipt.
Predicted Protein Size:	31 kDa
Gene Name:	BARX homeobox 2
Database Link:	NP_003649 Entrez Gene 12023 Mouse Q9UMQ3
Background:	Transcription factor. Binds optimally to the DNA consensus sequence 5'-YYTAATGRTTTY-3'. May control the expression of neural adhesion molecules such as L1 or Ng-CAM during embryonic development of both the central and peripheral nervous system. May be involved in controlling adhesive processes in keratinizing epithelia.
Synonyms:	MGC133368; MGC133369
Note:	Immunogen Sequence Homology: Dog: 93%; Pig: 93%; Rat: 93%; Horse: 93%; Human: 93%; Mouse: 93%; Bovine: 93%; Rabbit: 93%; Guinea pig: 93%; Zebrafish: 77%



[View online »](#)

Protein Families: Transcription Factors

Product images:



WB Suggested Anti-Barx2 Antibody Titration: 0.2-1 ug/ml; Positive Control: Mouse Small Intestine