

Product datasheet for **TA342305**

Irf5 Rabbit Polyclonal Antibody

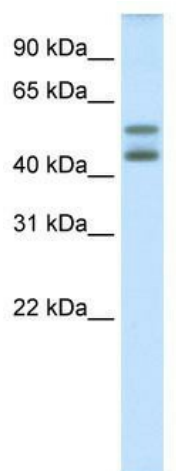
Product data:

Product Type:	Primary Antibodies
Applications:	WB
Recommended Dilution:	WB
Reactivity:	Human
Host:	Rabbit
Isotype:	IgG
Clonality:	Polyclonal
Immunogen:	The immunogen for anti-IRF5 antibody: synthetic peptide directed towards the N terminal of mouse IRF5. Synthetic peptide located within the following region: CSNGPAPTESQPTDDYVLGEEEEEEEEELQRMLPGLSITEPALPGPPNAP
Formulation:	Liquid. Purified antibody supplied in 1x PBS buffer with 0.09% (w/v) sodium azide and 2% sucrose. <i>Note that this product is shipped as lyophilized powder to China customers.</i>
Conjugation:	Unconjugated
Storage:	Store at -20°C as received.
Stability:	Stable for 12 months from date of receipt.
Predicted Protein Size:	55 kDa
Gene Name:	interferon regulatory factor 5
Database Link:	NP_036187 Entrez Gene 3663 Human P56477
Background:	Transcription factor involved in the induction of interferons IFNA and INFB and inflammatory cytokines upon virus infection. Activated by TLR7 or TLR8 signaling.
Synonyms:	IBD14; IRF-5; SLEB10
Note:	Immunogen Sequence Homology: Rat: 100%; Mouse: 100%



[View online »](#)

Product images:



WB Suggested Anti-IRF5 Antibody Titration: 0.15 ug/ml; ELISA Titer: 1:62500; Positive Control: Human Lymphnode