

Product datasheet for **TA342304**

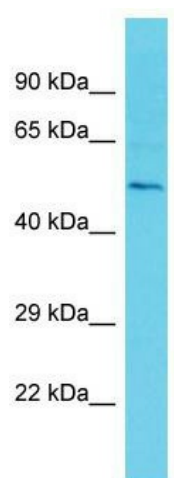
Etv3 Rabbit Polyclonal Antibody

Product data:

Product Type:	Primary Antibodies
Applications:	WB
Recommended Dilution:	WB
Reactivity:	Mouse
Host:	Rabbit
Isotype:	IgG
Clonality:	Polyclonal
Immunogen:	The immunogen for anti-Etv3 antibody is: synthetic peptide directed towards the C-terminal region of Mouse Etv3. Synthetic peptide located within the following region: EPLGTEDESDRSVREPGVPEKKEDALMPPKLRRLKRRWNDDPEARELNKT
Formulation:	Liquid. Purified antibody supplied in 1x PBS buffer with 0.09% (w/v) sodium azide and 2% sucrose. <i>Note that this product is shipped as lyophilized powder to China customers.</i>
Conjugation:	Unconjugated
Storage:	Store at -20°C as received.
Stability:	Stable for 12 months from date of receipt.
Predicted Protein Size:	56 kDa
Gene Name:	ets variant 3
Database Link:	NP_036181 Entrez Gene 27049 Mouse Q8R4Z4
Background:	The function of this protein remains unknown.
Synonyms:	bA110J1.4; FLJ79173; METS; PE-1; PE1
Note:	Immunogen Sequence Homology: Rat: 100%; Mouse: 100%



[View online »](#)

Product images:

Host: Rabbit; Target Name: Etv3; Sample Tissue: Mouse Testis lysates; Antibody Dilution: 1.0 ug/ml