

Product datasheet for **TA342302**

Ecsit Rabbit Polyclonal Antibody

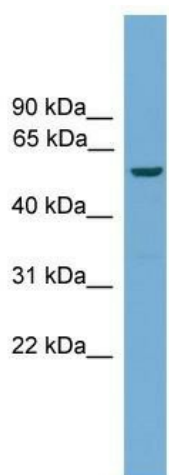
Product data:

Product Type:	Primary Antibodies
Applications:	WB
Recommended Dilution:	WB
Reactivity:	Mouse
Host:	Rabbit
Isotype:	IgG
Clonality:	Polyclonal
Immunogen:	The immunogen for anti-Ecsit antibody: synthetic peptide corresponding to a region of Mouse. Synthetic peptide located within the following region: EPWLVP RPPEPQRKPIKVPAMHEDSFKPSG NRERDKASFLNAVRSFGAHN
Formulation:	Liquid. Purified antibody supplied in 1x PBS buffer with 0.09% (w/v) sodium azide and 2% sucrose. <i>Note that this product is shipped as lyophilized powder to China customers.</i>
Conjugation:	Unconjugated
Storage:	Store at -20°C as received.
Stability:	Stable for 12 months from date of receipt.
Predicted Protein Size:	50 kDa
Gene Name:	ECSIT signalling integrator
Database Link:	NP_036159 Entrez Gene 26940 Mouse Q9QZH6
Background:	Ecsit is required for efficient assembly of mitochondrial NADH:ubiquinone oxidoreductase. Ecsit is an adapter protein of the Toll-like and IL-1 receptor signaling pathway that is involved in the activation of NF-kappa-B via MAP3K1. Ecsit promotes proteolytic activation of MAP3K1. Ecsit is involved in the BMP signaling pathway. Ecsit is required for normal embryonic development.
Synonyms:	SITPEC
Note:	Immunogen Sequence Homology: Mouse: 100%



[View online »](#)

Product images:



WB Suggested Anti-Ecsit Antibody Titration: 0.2-1 ug/ml; Positive Control: Mouse Heart