

Product datasheet for **TA342301**

Figla Rabbit Polyclonal Antibody

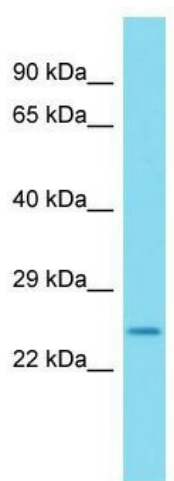
Product data:

Product Type:	Primary Antibodies
Applications:	WB
Recommended Dilution:	WB
Reactivity:	Mouse
Host:	Rabbit
Isotype:	IgG
Clonality:	Polyclonal
Immunogen:	The immunogen for anti-Figla antibody is: synthetic peptide directed towards the C-terminal region of Mouse Figla. Synthetic peptide located within the following region: SSTRELLGNATQPTSCASGLKKEEEGPWAYAGHSEPLYSHQSTVPETRS
Formulation:	Liquid. Purified antibody supplied in 1x PBS buffer with 0.09% (w/v) sodium azide and 2% sucrose.
Conjugation:	Unconjugated
Storage:	Store at -20°C as received.
Stability:	Stable for 12 months from date of receipt.
Predicted Protein Size:	21 kDa
Gene Name:	folliculogenesis specific basic helix-loop-helix
Database Link:	NP_036143 Entrez Gene 26910 Mouse O55208
Background:	Figla is a germ-line specific transcription factor implicated in postnatal oocyte-specific gene expression. It plays a key regulatory role in the expression of multiple oocyte-specific genes, including those that initiate folliculogenesis and those that encode the zona pellucida (ZP1, ZP2 and ZP3) required for fertilization and early embryonic survival. It is essential for oocytes to survive and form primordial follicles. The persistence of FIGLA in adult females suggests that it may regulate additional pathways that are essential for normal ovarian development. Figla binds to the E-box (5'-CANNTG-3') of the ZPs (ZP1, ZP2, ZP3) promoters.
Synonyms:	BHLHC8; FIGALPHA; POF6



[View online »](#)

Note: Immunogen Sequence Homology: Mouse: 100%; Rat: 86%

Product images:

Host: Rabbit; Target Name: Figla; Sample Tissue: Mouse Spleen lysates; Antibody Dilution: 1.0 ug/ml