

## Product datasheet for **TA342300**

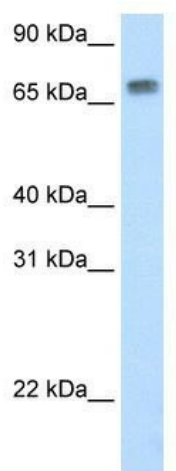
### MTA2 Rabbit Polyclonal Antibody

#### Product data:

Product Type:	Primary Antibodies
Applications:	WB
Recommended Dilution:	WB
Reactivity:	Mouse
Host:	Rabbit
Isotype:	IgG
Clonality:	Polyclonal
Immunogen:	The immunogen for anti-Mta2 antibody: synthetic peptide corresponding to a region of Mouse. Synthetic peptide located within the following region: YSLVFDPVQKTL LADQGEIRVGCKFQAEIPDRLAEGESDNRNQQKMEMKV
Formulation:	Liquid. Purified antibody supplied in 1x PBS buffer with 0.09% (w/v) sodium azide and 2% sucrose. <i>Note that this product is shipped as lyophilized powder to China customers.</i>
Conjugation:	Unconjugated
Storage:	Store at -20°C as received.
Stability:	Stable for 12 months from date of receipt.
Predicted Protein Size:	73 kDa
Gene Name:	metastasis associated 1 family member 2
Database Link:	<a href="#">NP_004730</a> <a href="#">Entrez Gene 23942 Mouse</a> <a href="#">O94776</a>
Background:	May be involved in the regulation of gene expression as repressor and activator. The repression might be related to covalent modification of histone proteins.
Synonyms:	MTA1L1; PID
Note:	Immunogen Sequence Homology: Dog: 100%; Pig: 100%; Rat: 100%; Horse: 100%; Mouse: 100%; Bovine: 100%; Rabbit: 100%; Goat: 93%; Human: 93%; Guinea pig: 93%; Yeast: 90%; Zebrafish: 77%
Protein Families:	Druggable Genome, Transcription Factors



[View online »](#)

**Product images:**

WB Suggested Anti-Mta2 Antibody Titration:  
0.725 ug/ml; Positive Control: SP2/0 cell lysate