

Product datasheet for **TA342297**

Tpbg Rabbit Polyclonal Antibody

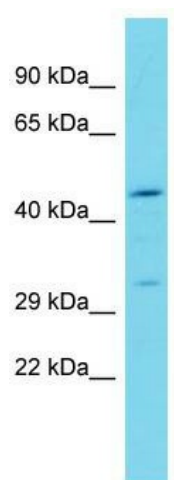
Product data:

Product Type:	Primary Antibodies
Applications:	WB
Recommended Dilution:	WB
Reactivity:	Mouse
Host:	Rabbit
Isotype:	IgG
Clonality:	Polyclonal
Immunogen:	The immunogen for anti-Tpbg antibody is: synthetic peptide directed towards the N-terminal region of Mouse Tpbg. Synthetic peptide located within the following region: GDGRLRLARLALVLLGWVSASAPSSSVSSSTSPAFLASGSAQPPPAER
Formulation:	Liquid. Purified antibody supplied in 1x PBS buffer with 0.09% (w/v) sodium azide and 2% sucrose. <i>Note that this product is shipped as lyophilized powder to China customers.</i>
Conjugation:	Unconjugated
Storage:	Store at -20°C as received.
Stability:	Stable for 12 months from date of receipt.
Predicted Protein Size:	46 kDa
Gene Name:	trophoblast glycoprotein
Database Link:	NP_035757 Entrez Gene 21983 Mouse Q9Z0L0
Background:	May function as an inhibitor of Wnt/beta-catenin signaling by indirectly interacting with LRP6 and blocking Wnt3a-dependent LRP6 internalization.
Synonyms:	5T4; 5T4-AG; 5T4AG; M6P1
Note:	Immunogen Sequence Homology: Rat: 100%; Mouse: 100%



[View online »](#)

Product images:



Host: Rabbit; Target Name: Tpbg; Sample Tissue: Mouse Heart lysates; Antibody Dilution: 1.0 ug/ml