

Product datasheet for **TA342295**

TCEA1 Rabbit Polyclonal Antibody

Product data:

Product Type:	Primary Antibodies
Applications:	WB
Recommended Dilution:	WB
Reactivity:	Mouse
Host:	Rabbit
Isotype:	IgG
Clonality:	Polyclonal
Immunogen:	The immunogen for anti-Tcea1 antibody: synthetic peptide corresponding to a region of Mouse. Synthetic peptide located within the following region: NALRKQSTDEEVTSIAKSLIKSWKKLLDGPSTDKDPEEKKKEPAISSQNS
Formulation:	Liquid. Purified antibody supplied in 1x PBS buffer with 0.09% (w/v) sodium azide and 2% sucrose. <i>Note that this product is shipped as lyophilized powder to China customers.</i>
Conjugation:	Unconjugated
Storage:	Store at -20°C as received.
Stability:	Stable for 12 months from date of receipt.
Predicted Protein Size:	34 kDa
Gene Name:	transcription elongation factor A1
Database Link:	NP_958845 Entrez Gene 21399 Mouse P23193
Background:	Necessary for efficient RNA polymerase II transcription elongation past template-encoded arresting sites. The arresting sites in DNA have the property of trapping a certain fraction of elongating RNA polymerases that pass through, resulting in locked ternary complexes. Cleavage of the nascent transcript by S-II allows the resumption of elongation from the new 3'-terminus.
Synonyms:	GTF2S; SII; TCEA; TF2S; TFIIS

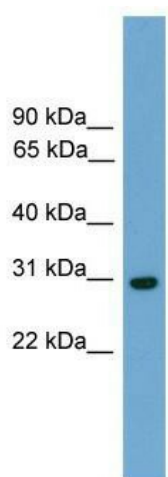


[View online »](#)

Note: Immunogen Sequence Homology: Mouse: 100%; Rat: 93%; Rabbit: 93%; Dog: 79%; Pig: 79%; Horse: 79%; Human: 79%; Guinea pig: 79%

Protein Families: Transcription Factors

Product images:



WB Suggested Anti-Tcea1 Antibody Titration: 0.2-1 ug/ml; Positive Control: Mouse Spleen