

Product datasheet for **TA342293**

TBX5 Rabbit Polyclonal Antibody

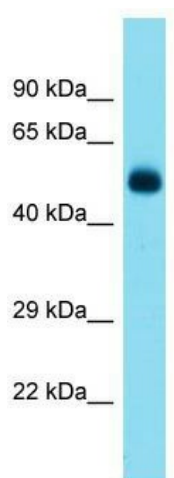
Product data:

Product Type:	Primary Antibodies
Applications:	WB
Recommended Dilution:	WB
Reactivity:	Mouse
Host:	Rabbit
Isotype:	IgG
Clonality:	Polyclonal
Immunogen:	The immunogen for anti-Tbx5 antibody is: synthetic peptide directed towards the N-terminal region of Mouse Tbx5. Synthetic peptide located within the following region: TDEGFGLARTPLEPDSKDRSCDSKPESALGAPSKSPSSPQAAFTQQGMEG
Formulation:	Liquid. Purified antibody supplied in 1x PBS buffer with 0.09% (w/v) sodium azide and 2% sucrose. <i>Note that this product is shipped as lyophilized powder to China customers.</i>
Conjugation:	Unconjugated
Storage:	Store at -20°C as received.
Stability:	Stable for 12 months from date of receipt.
Predicted Protein Size:	58 kDa
Gene Name:	T-box 5
Database Link:	NP_000183 Entrez Gene 21388 Mouse Q99593
Background:	Involved in the transcriptional regulation of genes required for mesoderm differentiation. Probably plays a role in limb pattern formation.
Synonyms:	HOS
Note:	Immunogen Sequence Homology: Rat: 100%; Mouse: 100%; Dog: 93%; Pig: 93%; Guinea pig: 93%; Rabbit: 92%; Horse: 86%; Human: 86%; Bovine: 86%
Protein Families:	Druggable Genome, Transcription Factors



[View online »](#)

Product images:



Host: Rabbit; Target Name: Tbx5; Sample Tissue: Mouse Pancreas lysates; Antibody Dilution: 1.0 ug/ml