

Product datasheet for **TA342292**

Srebf1 Rabbit Polyclonal Antibody

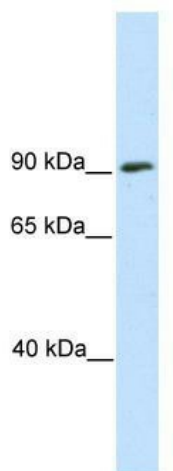
Product data:

Product Type:	Primary Antibodies
Applications:	WB
Recommended Dilution:	WB
Reactivity:	Mouse
Host:	Rabbit
Isotype:	IgG
Clonality:	Polyclonal
Immunogen:	The immunogen for anti-SREBF1 antibody: synthetic peptide directed towards the N terminal of mouse SREBF1. Synthetic peptide located within the following region: DIEDMLQLINNQDSDFPGLFDAPYAGGETGDTGPSSPGANSPESFSSASL
Formulation:	Liquid. Purified antibody supplied in 1x PBS buffer with 0.09% (w/v) sodium azide and 2% sucrose. <i>Note that this product is shipped as lyophilized powder to China customers.</i>
Conjugation:	Unconjugated
Storage:	Store at -20°C as received.
Stability:	Stable for 12 months from date of receipt.
Predicted Protein Size:	125 kDa
Gene Name:	sterol regulatory element binding transcription factor 1
Database Link:	NP_035610 Entrez Gene 20787 Mouse Q9WTN3
Background:	Srebf1 is transcriptional activator that binds to the sterol regulatory element 1 (SRE-1) (5'-ATCACCCAC-3'). Srebf1 also binds to an E-box motif (5'-ATCACGTGA-3'). Srebf1 regulates the transcription of genes for sterol biosynthesis and the LDL receptor gene.
Synonyms:	bHLHd1; SREBP-1; SREBP-1c; SREBP1
Note:	Immunogen Sequence Homology: Mouse: 100%; Rat: 93%

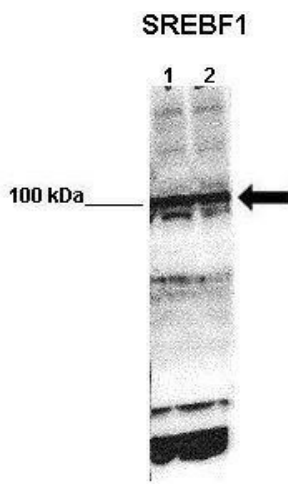


[View online »](#)

Product images:



WB Suggested Anti-SREBF1 Antibody Titration:
0.2-1 ug/ml; ELISA Titer: 1:62500; Positive Control:
SP2/O cell lysate



WB Suggested Anti-SREBF1 Antibody ; Positive
Control: Lane 1: 50ug mouse glomerular
endothelial lysate Lane 2: 50ug mouse
glomerular endothelial lysate; Primary Antibody
Dilution : 1:1000; Secondary Antibody : Anti-
rabbit-HRP; Secondary Antibody Dilution :