

Product datasheet for **TA342287**

ROR gamma (RORC) Rabbit Polyclonal Antibody

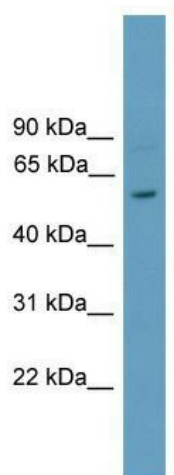
Product data:

Product Type:	Primary Antibodies
Applications:	WB
Recommended Dilution:	WB
Reactivity:	Mouse
Host:	Rabbit
Isotype:	IgG
Clonality:	Polyclonal
Immunogen:	The immunogen for anti-Rorc antibody: synthetic peptide corresponding to a region of Mouse. Synthetic peptide located within the following region: VKFGRMSKKQRDSLHAEVQKQLQQQQQEQVAKTPPAGSRGADTLTYTLG
Formulation:	Liquid. Purified antibody supplied in 1x PBS buffer with 0.09% (w/v) sodium azide and 2% sucrose. <i>Note that this product is shipped as lyophilized powder to China customers.</i>
Conjugation:	Unconjugated
Storage:	Store at -20°C as received.
Stability:	Stable for 12 months from date of receipt.
Predicted Protein Size:	58 kDa
Gene Name:	RAR related orphan receptor C
Database Link:	NP_005051 Entrez Gene 19885 Mouse P51449
Background:	Rorc is an orphan nuclear receptor. Isoform 2 negatively regulates expression of TNFSF6/FASL and IL2 production in T-cells. It also binds to the TEA promoter and may participate in the regulation of DNA accessibility in the TCR-Jalpha locus.
Synonyms:	NR1F3; RORG; RZR-GAMMA; RZRG; TOR
Note:	Immunogen Sequence Homology: Mouse: 100%; Rat: 93%; Dog: 85%; Pig: 79%; Human: 79%; Guinea pig: 79%
Protein Families:	Druggable Genome, Transcription Factors



[View online »](#)

Product images:



WB Suggested Anti-Rorc Antibody Titration: 1 ug/ml; Positive Control: Mouse Heart lysate