

Product datasheet for **TA342286**

Nkx2-6 Rabbit Polyclonal Antibody

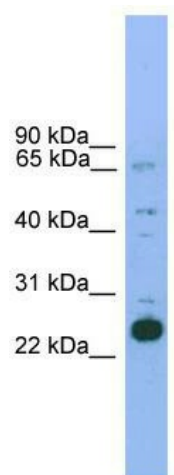
Product data:

| | |
|-------------------------|---|
| Product Type: | Primary Antibodies |
| Applications: | WB |
| Recommended Dilution: | WB |
| Reactivity: | Mouse |
| Host: | Rabbit |
| Isotype: | IgG |
| Clonality: | Polyclonal |
| Immunogen: | The immunogen for anti-Nkx2-6 antibody: synthetic peptide corresponding to a region of Mouse. Synthetic peptide located within the following region: MGSNPVGEPTPPGTISRLGARNPMTDRGVGNLSGDMRRGGPVSTRTRPQ |
| Formulation: | Liquid. Purified antibody supplied in 1x PBS buffer with 0.09% (w/v) sodium azide and 2% sucrose. <i>Note that this product is shipped as lyophilized powder to China customers.</i> |
| Conjugation: | Unconjugated |
| Storage: | Store at -20°C as received. |
| Stability: | Stable for 12 months from date of receipt. |
| Predicted Protein Size: | 23 kDa |
| Gene Name: | NK2 homeobox 6 |
| Database Link: | NP_035050 Entrez Gene 18092 Mouse P43688 |
| Background: | The function of this protein remains unknown. |
| Note: | Immunogen Sequence Homology: Mouse: 100%; Rat: 83% |



[View online »](#)

Product images:



WB Suggested Anti-Nkx2-6 Antibody Titration:
0.2-1 ug/ml; ELISA Titer: 1:1562500; Positive
Control: Mouse Heart