

Product datasheet for **TA342285**

Nkx2.2 (NKX2-2) Rabbit Polyclonal Antibody

Product data:

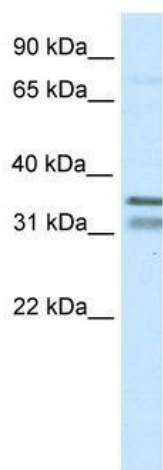
Product Type:	Primary Antibodies
Applications:	WB
Recommended Dilution:	WB
Reactivity:	Mouse
Host:	Rabbit
Isotype:	IgG
Clonality:	Polyclonal
Immunogen:	The immunogen for anti-NKX2-2 antibody: synthetic peptide corresponding to a region of Mouse. Synthetic peptide located within the following region: EGPEESEGPEPAKRAGPLGQGALDAVQSLPLKSPFYDSSDNPYTRWLAS
Formulation:	Liquid. Purified antibody supplied in 1x PBS buffer with 0.09% (w/v) sodium azide and 2% sucrose. <i>Note that this product is shipped as lyophilized powder to China customers.</i>
Conjugation:	Unconjugated
Storage:	Store at -20°C as received.
Stability:	Stable for 12 months from date of receipt.
Predicted Protein Size:	30 kDa
Gene Name:	NK2 homeobox 2
Database Link:	NP_002500 Entrez Gene 18088 Mouse O95096
Background:	Nkx2-2 contains 1 homeobox DNA-binding domain which is essential for interaction with OLIG2. Nkx2-2 may be involved in specifying diencephalic neuromeric boundaries, and in controlling the expression of genes that play a role in axonal guidance.
Synonyms:	NKX2.2; NKX2B
Note:	Immunogen Sequence Homology: Rat: 100%; Mouse: 100%; Rabbit: 100%; Dog: 93%; Pig: 93%; Horse: 93%; Human: 93%; Sheep: 93%; Bovine: 93%; Guinea pig: 93%; Zebrafish: 79%
Protein Families:	Transcription Factors



[View online »](#)

Protein Pathways: Maturity onset diabetes of the young

Product images:



WB Suggested Anti-NKX2-2 Antibody Titration:
0.125 ug/ml; ELISA Titer: 1:1562500; Positive
Control: SP2/0 cell lysate