

## Product datasheet for **TA342283**

### NFAT1 (NFATC2) Rabbit Polyclonal Antibody

#### Product data:

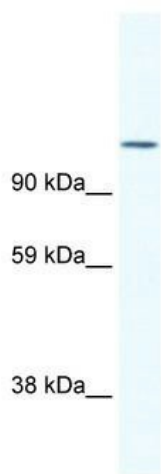
Product Type:	Primary Antibodies
Applications:	WB
Recommended Dilution:	WB
Reactivity:	Mouse
Host:	Rabbit
Isotype:	IgG
Clonality:	Polyclonal
Immunogen:	The immunogen for anti-NFATC2 antibody: synthetic peptide directed towards the N terminal of mouse NFATC2. Synthetic peptide located within the following region: MDVPEPQPDPDGGDGPHEPGGSPQDELDFILFDYDYLNPIDEEPIAHK
Formulation:	Liquid. Purified antibody supplied in 1x PBS buffer with 0.09% (w/v) sodium azide and 2% sucrose. <i>Note that this product is shipped as lyophilized powder to China customers.</i>
Conjugation:	Unconjugated
Storage:	Store at -20°C as received.
Stability:	Stable for 12 months from date of receipt.
Predicted Protein Size:	102 kDa
Gene Name:	nuclear factor of activated T-cells 2
Database Link:	<a href="#">NP_036472</a> <a href="#">Entrez Gene 18019 Mouse Q13469</a>
Background:	Plays a role in the inducible expression of cytokine genes in T-cells, especially in the induction of the IL-2, IL-3, IL-4, TNF-alpha or GM-CSF. Promotes invasive migration through the activation of GPC6 expression and WNT5A signaling pathway.
Synonyms:	NFAT1; NFATP
Note:	Immunogen Sequence Homology: Mouse: 100%; Rat: 93%; Horse: 93%; Human: 93%; Bovine: 86%; Dog: 82%; Pig: 79%
Protein Families:	Druggable Genome, Transcription Factors



[View online »](#)

**Protein Pathways:**

Axon guidance, B cell receptor signaling pathway, MAPK signaling pathway, Natural killer cell mediated cytotoxicity, T cell receptor signaling pathway, VEGF signaling pathway, Wnt signaling pathway

**Product images:**

WB Suggested Anti-NFATC2 Antibody Titration:  
1.25 ug/ml; ELISA Titer: 1:312500; Positive  
Control: SP2/0 cell lysate